

# Guest House - Bed & Breakfast Drumbeg "Croft 338"

A fully modernized traditional highland croft house



**Country House**, detached, single storey, separate entrance, in a(an) Private property

Setting : picturesque, peaceful

Guest Room(s) : 2

Receive up to : **from 1 to 4 guests**

- Room "Small twin with private shower/toilet"  
2 person(s)
- Room "Double en suite"  
2 person(s)

**Drumbeg - Highlands**

**Scotland**

Advert No. 4961

Reservation : +44 (0) 1571833221 (United Kingdom)

[www.ihaco.nz](http://www.ihaco.nz)



>> HOLIDAY LETTINGS

BOOK DIRECT WITH THE OWNERS

## Guest House - Bed & Breakfast



Country House, detached, single storey, separate entrance, in a(an) Private property

- **Ideal for couples, retired people**
- **View :** sea/ocean, mountain, country side, village
- **Setting :** picturesque, peaceful
- **Exposure :** South-east

"Double-Ensuite: Sleeps 2 persons including a comfortable double bed, free Wi-Fi connection, tea and coffee making facilities, color television, hair dryer, heater and desk with lamp. NON-SMOKING. Small Twin: Sleeps 2 persons in two comfortable single beds including free Wi-Fi connection, tea and coffee making facilities, color television, hair dryer, heater and desk with lamp. NON-SMOKING."

## Assets

- **Parking :**  
Parking uncovered : 4 off road.



sea/ocean

## Surroundings & location



Mountain

" Enjoy the unique and picturesque mountains of Assynt. Offering truly spectacular mountain and sea views along with peace, tranquillity and complete relaxation. Hill and coastal walking, climbing, fishing, canoeing and wildlife spotting are in the immediate area, with boat cruises, kayaking, cycling, diving and nature studies (Handa Island Nature Reserve) within easy reach. "

### Leisure

- **Leisure activities less than 20 km / 12 miles :**

Hiking, boat trips, fishing

- **Attractions and relaxation :**

Bar/pub, local craftshop

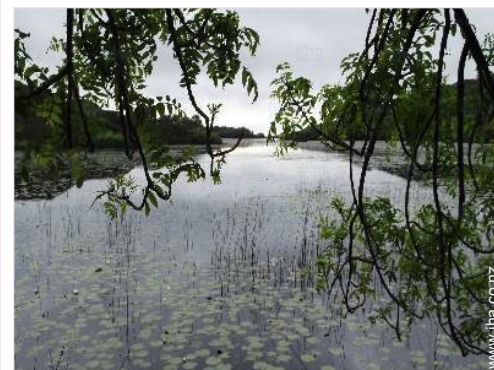
### Surroundings

- **Locality :**

Sea/ocean 800m  
Mountain range 15km

- **Amenities :**

Village centre 500m  
Local shops 500m  
Post office 25km  
Bank 25km  
Doctor 25km  
Nurse 25km



View



Mountain



The guest room

### Interior

- Receive up to :  
from 1 to 4 guests, 2 Guest Room(s)
- Liveable floor area :  
< 12m<sup>2</sup>
- Interior comforts at guests disposal :  
T.V., internet access, wifi, hair dryer, electric heating



The guest room

### Exterior

- Ground surface :  
< 100m<sup>2</sup>
- Outside at the guests disposal :  
Lawn 50m<sup>2</sup>
- Exterior amenities at guests disposal :  
Garden table(s), 4 garden seat(s)

### Services

- Restauration :  
Breakfast, Guest table

### For your guidance

- For your guidance  
No children under 13 years old  
No pet allowed  
Non smoking rental  
Water : hot/cold  
Local voltage supply : 220-240V / 50Hz  
Electricity supply : mains



view of the village

Room "Small twin with private shower/toilet"



2 person(s) : 2 adults

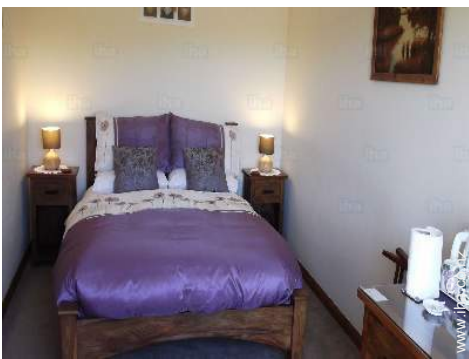


bedroom

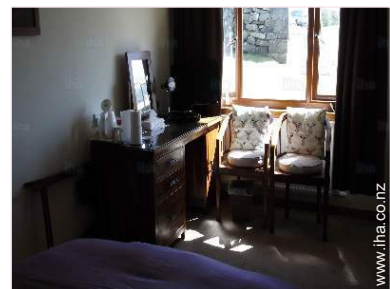


Facilities exclusive to

Room "Double en suite"



2 person(s) : 2 adults



bedroom



Facilities exclusive to

Guest House - Bed & Breakfast  
Drumbeg - Scotland  
"Croft 338"

5

[Book now](#)

Photo album - 1



sea/ocean



Mountain



View



view of the village

Advert No. 4961

[www.ihaholidayads.co.nz](http://www.ihaholidayads.co.nz)



[>> HOLIDAY LETTINGS](#)

[BOOK DIRECT WITH THE OWNERS](#)

Photo album - 2



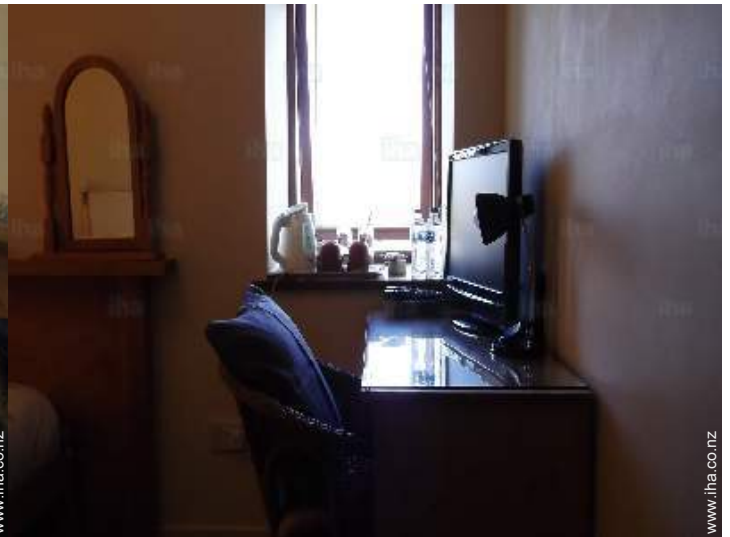
The guest room



The guest room



The guest room



The guest room



dining room

### Location



### Location & Access

" We are located opposite the Viewpoint in Drumbeg on the North Assynt Estate, Sutherland. B869 single track road coastal route, 9 miles from Newton, 14 miles from Lochinver. Map reference: 330120 (viewpoint) Landranger Ordnance Survey map No: 15 'Loch Assynt'. "



GPS coordinates in degrees, minutes, seconds: Latitude 58°14'38"N - Longitude 5°12'23"W ([Dwelling](#))

#### Address

→ Croft 338  
IV27 Drumbeg

#### • Airport Inverness

→ Inverness, Highlands, Scotland  
→ Distance : 170km  
→ Time : 2h30'

#### • Coach station Rapsons

→ Ullapool, Highlands, Scotland  
→ Distance : 65km  
→ Time : 1h45'

- Lochinver : (24km)
- Ullapool : (65km)

### Contact

Spoken languages



Guest House - Bed & Breakfast  
Highlands - Scotland  
"Croft 338"

[Book now](#)

Availability calendar - from : april 2019

Apr	M	Tu	W	Th	F	Sa	Su	M	Tu	W	Th	F	Sa	Su	M	Tu	W	Th	F	Sa	Su	M	Tu	W	Th	F	Sa	Su	M	Tu
2019	1	2	3	4	5	6	7	8	9	10	11	12	13	14	15	16	17	18	19	20	21	22	23	24	25	26	27	28	29	30
1																														
2																														

May	W	Th	F	Sa	Su	M	Tu	W	Th	F	Sa	Su	M	Tu	W	Th	F	Sa	Su	M	Tu	W	Th	F	Sa	Su	M	Tu	W	Th	F
2019	1	2	3	4	5	6	7	8	9	10	11	12	13	14	15	16	17	18	19	20	21	22	23	24	25	26	27	28	29	30	31
1	-	-	-	-	-	-	-	-	-	-	-	-	-	-	-	-	-	-	-	-	-	-	-	-	-	-	-	-	-	-	
2	-	-	-	-	-	-	-	-	-	-	-	-	-	-	-	-	-	-	-	-	-	-	-	-	-	-	-	-	-	-	

June	Sa	Su	M	Tu	W	Th	F	Sa	Su	M	Tu	W	Th	F	Sa	Su	M	Tu	W	Th	F	Sa	Su							
2019	1	2	3	4	5	6	7	8	9	10	11	12	13	14	15	16	17	18	19	20	21	22	23	24	25	26	27	28	29	30
1	-	-	-	-	-	-	-	-	-	-	-	-	-	-	-	-	-	-	-	-	-	-	-	-	-	-	-	-	-	
2	-	-	-	-	-	-	-	-	-	-	-	-	-	-	-	-	-	-	-	-	-	-	-	-	-	-	-	-	-	

Jul	M	Tu	W	Th	F	Sa	Su	M	Tu	W	Th	F	Sa	Su	M	Tu	W	Th	F	Sa	Su	M	Tu	W	Th	F	Sa	Su	M	Tu	W
2019	1	2	3	4	5	6	7	8	9	10	11	12	13	14	15	16	17	18	19	20	21	22	23	24	25	26	27	28	29	30	31
1	-	-	-	-	-	-	-	-	-	-	-	-	-	-	-	-	-	-	-	-	-	-	-	-	-	-	-	-	-	-	
2	-	-	-	-	-	-	-	-	-	-	-	-	-	-	-	-	-	-	-	-	-	-	-	-	-	-	-	-	-	-	

Aug	Th	F	Sa	Su	M	Tu	W	Th	F	Sa	Su	M	Tu	W	Th	F	Sa	Su	M	Tu	W	Th	F	Sa	Su	M	Tu	W	Th	F	Sa
2019	1	2	3	4	5	6	7	8	9	10	11	12	13	14	15	16	17	18	19	20	21	22	23	24	25	26	27	28	29	30	31
1	-	-	-	-	-	-	-	-	-	-	-	-	-	-	-	-	-	-	-	-	-	-	-	-	-	-	-	-	-	-	
2	-	-	-	-	-	-	-	-	-	-	-	-	-	-	-	-	-	-	-	-	-	-	-	-	-	-	-	-	-	-	

Sep	Su	M	Tu	W	Th	F	Sa	Su	M	Tu	W	Th	F	Sa	Su	M	Tu	W	Th	F	Sa	Su	M	Tu	W	Th	F	Sa	Su	M
2019	1	2	3	4	5	6	7	8	9	10	11	12	13	14	15	16	17	18	19	20	21	22	23	24	25	26	27	28	29	30
1	-	-	-	-	-	-	-	-	-	-	-	-	-	-	-	-	-	-	-	-	-	-	-	-	-	-	-	-	-	-
2	-	-	-	-	-	-	-	-	-	-	-	-	-	-	-	-	-	-	-	-	-	-	-	-	-	-	-	-	-	-

Oct	Tu	W	Th	F	Sa	Su	M	Tu	W	Th	F	Sa	Su	M	Tu	W	Th	F	Sa	Su	M	Tu	W	Th	F	Sa	Su	M	Tu	W	Th
2019	1	2	3	4	5	6	7	8	9	10	11	12	13	14	15	16	17	18	19	20	21	22	23	24	25	26	27	28	29	30	31
1	-	-	-	-	-	-	-	-	-	-	-	-	-	-	-	-	-	-	-	-	-	-	-	-	-	-	-	-	-	-	
2	-	-	-	-	-	-	-	-	-	-	-	-	-	-	-	-	-	-	-	-	-	-	-	-	-	-	-	-	-	-	

Nov	F	Sa	Su	M	Tu	W	Th	F	Sa	Su	M	Tu	W	Th	F	Sa	Su	M	Tu	W	Th	F	Sa							
2019	1	2	3	4	5	6	7	8	9	10	11	12	13	14	15	16	17	18	19	20	21	22	23	24	25	26	27	28	29	30
1	-	-	-	-	-	-	-	-	-	-	-	-	-	-	-	-	-	-	-	-	-	-	-	-	-	-	-	-	-	
2	-	-	-	-	-	-	-	-	-	-	-	-	-	-	-	-	-	-	-	-	-	-	-	-	-	-	-	-	-	

- 1 Room "Double en suite" - 2 person(s)
- 2 Room "Small twin with private shower/toilet" - 2 person
- High season





Guest House - Bed & Breakfast  
Drumbeg - Scotland  
"Croft 338"

[Book now](#)

Availability calendar - from : november 2019

Dec	Su	M	Tu	W	Th	F	Sa	Su	M	Tu	W	Th	F	Sa	Su	M	Tu	W	Th	F	Sa	Su	M	Tu							
2019	1	2	3	4	5	6	7	8	9	10	11	12	13	14	15	16	17	18	19	20	21	22	23	24	25	26	27	28	29	30	31
1	-	-	-	-	-	-	-	-	-	-	-	-	-	-	-	-	-	-	-	-	-	-	-	-	-	-	-	-	-	-	
2	-	-	-	-	-	-	-	-	-	-	-	-	-	-	-	-	-	-	-	-	-	-	-	-	-	-	-	-	-	-	

Jan	W	Th	F	Sa	Su	M	Tu	W	Th	F	Sa	Su	M	Tu	W	Th	F	Sa	Su	M	Tu	W	Th	F							
2020	1	2	3	4	5	6	7	8	9	10	11	12	13	14	15	16	17	18	19	20	21	22	23	24	25	26	27	28	29	30	31
1	-	-	-	-	-	-	-	-	-	-	-	-	-	-	-	-	-	-	-	-	-	-	-	-	-	-	-	-	-	-	
2	-	-	-	-	-	-	-	-	-	-	-	-	-	-	-	-	-	-	-	-	-	-	-	-	-	-	-	-	-	-	

Feb	Sa	Su	M	Tu	W	Th	F	Sa	Su	M	Tu	W	Th	F	Sa	Su	M	Tu	W	Th	F	Sa							
2020	1	2	3	4	5	6	7	8	9	10	11	12	13	14	15	16	17	18	19	20	21	22	23	24	25	26	27	28	29
1	-	-	-	-	-	-	-	-	-	-	-	-	-	-	-	-	-	-	-	-	-	-	-	-	-	-	-	-	-
2	-	-	-	-	-	-	-	-	-	-	-	-	-	-	-	-	-	-	-	-	-	-	-	-	-	-	-	-	-







  




Mar	Su	M	Tu	W	Th	F	Sa	Su	M	Tu	W	Th	F	Sa	Su	M	Tu	W	Th	F	Sa	Su	M	Tu							
2020	1	2	3	4	5	6	7	8	9	10	11	12	13	14	15	16	17	18	19	20	21	22	23	24	25	26	27	28	29	30	31
1	-	-	-	-	-	-	-	-	-	-	-	-	-	-	-	-	-	-	-	-	-	-	-	-	-	-	-	-	-	-	
2	-	-	-	-	-	-	-	-	-	-	-	-	-	-	-	-	-	-	-	-	-	-	-	-	-	-	-	-	-	-	

- 1 Room "Double en suite" - 2 person(s)
- 2 Room "Small twin with private shower/toilet" - 2 person
- High season

[Month : Next >>](#)

Rental rates "Croft 338"

Guest House - Bed & Breakfast Rates		Night	Weekend	week	2 weeks	Month
1 Room "Double en suite" 2 person(s) (2 adults)		NZ\$125*	-	-	-	-
		NZ\$145*	-	-	-	-
		NZ\$116* > 2	-	-	-	-
2 Room "Small twin with private shower/toilet" 2 person(s) (2 adults)		NZ\$96*	-	-	-	-
		NZ\$116*	-	-	-	-
		NZ\$87* > 2	-	-	-	-

 Low season     
  High season     
  Promotional period

> Minimum Night

[Book now](#)





View



view of the village



The guest room



sea/ocean



Mountain

### Booking conditions

#### • Reservation

- Payment made upon reservation : NZ\$48\*
- Deposit required : NZ\$48\*

#### • rentals

- Service charges included
- Day tax included
- Cleaning charge on departure included

### Accepted methods of payment

- Visa/Delta/Electron • Switch/Maestro • MasterCard/EuroCard • JCB • Diners Club • Discover • Cash

[▶ Book now](#)

[▶ Contact the owner](#)

Contact directly the property owners

[www.iha.co.nz](http://www.iha.co.nz)

Advert No.

4961

[>> Book now <<](#)

### Contact

Spoken languages



\* Converted at the rate indicated : €100 = \$116.85 = £89 = NZ\$171.66

Advert No. 4961

[www.iha.co.nz](http://www.iha.co.nz)

