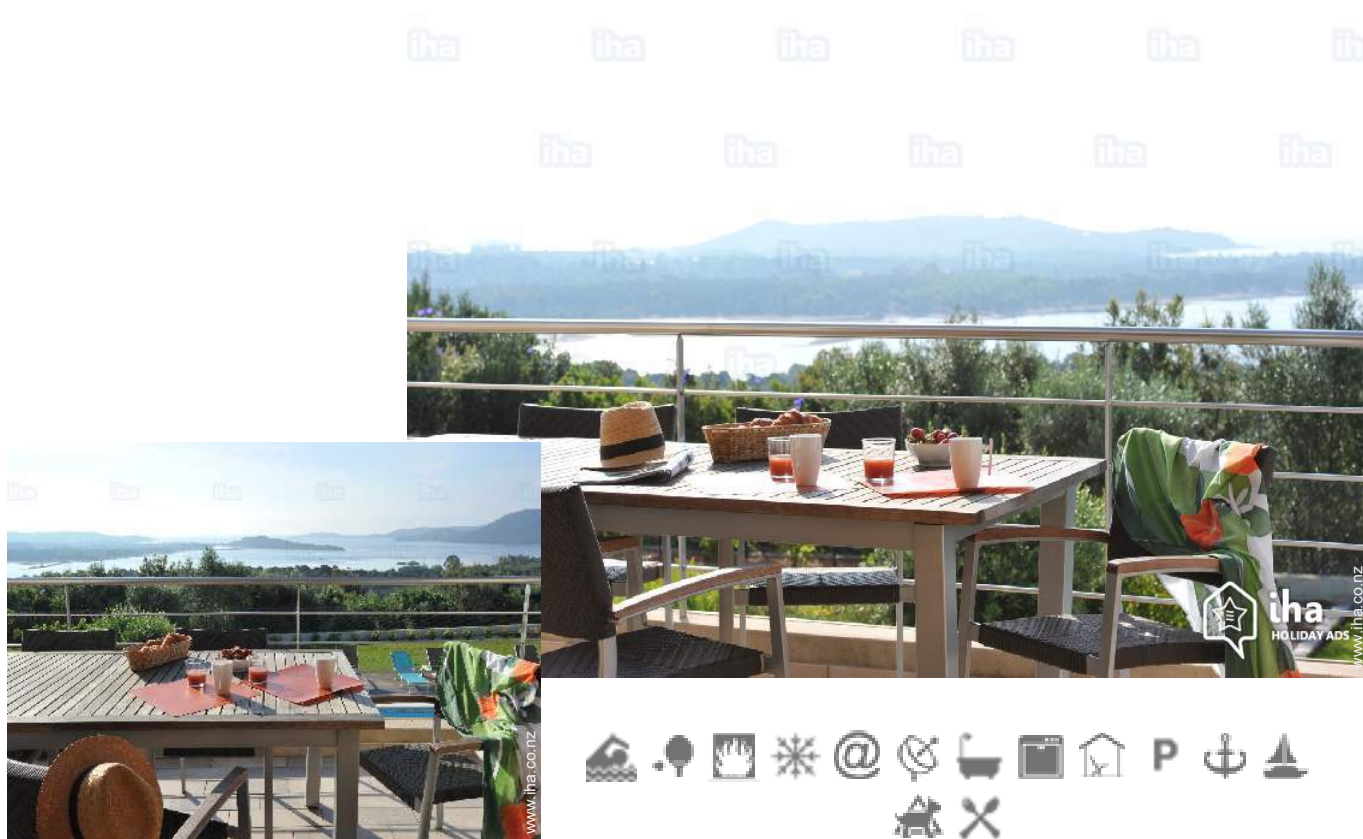


Luxury holiday letting Porto-Vecchio Luxury Villa

Luxury villa for sea-mountain 360 °, private property, pool, sport view, games.



Luxury Villa, detached, 1 floor, separate entrance, in a(an) Private property

Setting : enchanting, suitable for a relaxing break

Capacity : from 1 to 9 person(s)

Bedroom(s) : 6

Room(s) : 6



Meublés de Tourisme (5 stars)

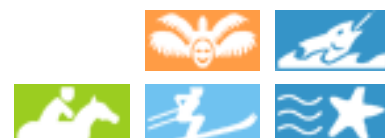
Porto-Vecchio - South Corsica (2A) - Corsica

France

Reservation : +33 (0) 495700185 (France)

Advert No. 57960

www.ihaco.nz



>> HOLIDAY LETTINGS

BOOK DIRECT WITH THE OWNERS

Luxury holiday letting



Luxury Villa, detached, 1 floor, separate entrance, in a(an) Private property

• Ideal for all age groups

- View : panoramic, not overlooked, dominant, sea/ocean, swimming pool, river
- Setting : enchanting, suitable for a relaxing break
- Exposure : South-east

" New Villa, comfortable, heated and covered new pool d removable shelter off-season, panoramic view of the entire Gulf of Porto Vecchio, solarium, all furniture, connection wi fi, kitchen bar d was the pool with patio teak 150 m2, sunshine all day large games room with a billiards table football and a fully equipped weight room , fitness, outdoor giant chess game, ping pong, badminton... "

Assets

• Swimming pool :

Private swimming-pool, oval (length 10m, width 5,50m), heated, covered, illuminated, steps in, child secure, outside shower (open from '01 january' till '31 december')

• Parking :

Parking uncovered : 4 internal.

• Advantages :

Fitness machine(s), billiard table, table football, ping-pong table, ping-pong bats, volley ball court, pétanque pitch, 4 pétanque set(s), motor boat

• baby equipment :

Baby chair, baby changer, baby bath, baby potty, playpen, pushchair

Benefits :
Private jetty

Surroundings & location



Seaside

Ski

Horse riding

Fishing



Festival

" GET AWAY TO PORTO-VECCHIO. Paradise between sea and mountain, the region of Porto Vecchio is a destination privileged to share landscapes but also of its food quality and an incomparable variety. The Villa will be the perfect place for your family, with friends or as a couple. We attach special attention to the well-being of our clients, with a high level of benefits. New this year a boat brand new allowing the visit of all the far south. Everything is done for the quality of your stay is up to our beautiful island. Located at hundred meters of altitude, the Villa dominates all the Gulf of Porto-Vecchio, with a panoramic view from the Tower of Pinarellu in the Gulf of Porto-Vecchio, via the beaches of Saint-Cyprien and Cala Rossa Benedettu. Panoramic sea view. Nearby shops and restaurants. Beach five minutes of car. River 10 minutes from car. "

Leisure

• Leisure activities less than 20 km / 12 miles :

Bathing, pedalo, scuba diving, banana boat, water skiing, jet ski, surfing, windsurfing, sailing, kite surfing, canyoning, tennis, squash, riding school, mountain bike (path), boat trips, mini-golf, ten-pin bowling, paintball, fishing, pétanque pitch

• Supervised :

Sailing school, dive school, tennis school, riding school

• Attractions and relaxation :

Bar/pub, discotheque, restaurant, open air summer cinema, nature reserve, historical site, theatre, festivals, local craftshop, beauticians

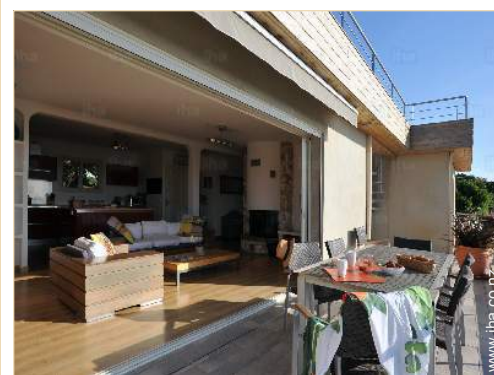
Surroundings

• Locality :

Sea/ocean 2km
Sandy beach 2km
Rocky beach 2km
18 hole golf course 25km
Surfing spots 3km
Watersports centre 5km
Waterfall 15km
River 3km
Forest 3km
Mountain range 20km
Marina 3km
Slipway 3km
Via ferrata-alpinism 20km

• Amenities :

Village centre 3km
Town centre 3km
Ski hire shop 3km
Scuba diving material hire 3km
Breadshop 1km
Local shops 1km
Supermarket 2km
Post office 2,5km
Bank 2,5km
Cash point 2,5km
Chemist 2,5km
Doctor 3km
Hospital 2,5km



terrace



Seaside



kitchen

Exterior

- **Ground surface :**
2000m²
- **Outside accommodation :**
Terrace 200m², covered terrace, roof terrace, sundeck
- **Outside setting :**
Enclosed grounds 2000m², garden 100m², landscaped garden, lawn 100m²
- **Outside amenities :**
Summer kitchen, summer living area, outside bar, BBQ, garden table(s), garden seat(s), parasol, garden seated area, chaise (s) longue(s), sun recliner(s), child's swing, climbing frame, outside shower facilities



kitchen

Interior

- **Receive up to :**
from 1 to 9 person(s)
- **Liveable floor area :**
200m²
- **Interior layout :**
6 Room(s), 6 bedroom(s), 4 bathroom, 4 WC, living room 25m², sitting room 35m², american style kitchen, dining room, dining area, cosy nook, tv room, music room, games room, fitness room, dressing room, study, laundry room
- **Sleeps - bed(s) :**
2 double bed(s), 4 single bed(s)
- **Guest facilities :**
Fireplace, T.V., home cinema, hi-fi system, videoplayer, DVD player, video games, board games, film collection, cable/satelite, internet access, high speed internet access, wifi, cupboard, Hanging wardrobe, safe deposit box, hair dryer, power shower, fully air conditioned, Glazed in area, Curtains, Blinds, Double glazed, electric shutters, remote controlled gates
- **Appliances :**
Crockery/cutlery, kitchen utensils, electric coffee maker, electric kettle, toaster, juicer, food processor, electric raclette set, meat grill, electric hobs, oven, micro-wave oven, extractor hood, refridgerator, freezer, dish washer, washing machine, clothes dryer, vacuum cleaner, iron, ironing board

Services

- **Washing :**
Sheets (1 X / per week), Towels (1 X / per week), Linen (1 X / per week), Blanket(s), Quilt(s), Pillows
- **House :**
Cleaning supplement (+NZ\$34*), Cleaning on departure, Garden/swimming pool maintenance, Caretaker/concierge supplement, Parking, Airport transfers supplement (+ NZ\$343*)
- **Personnel :**
Staff supplement, Chef(s) supplement, Chauffeur supplement, Laundry supplement, Baby sitting supplement
- **Restauration :**
Picnic basket supplement

For your guidance

- **For your guidance**
Children welcome
Pets accepted under certain conditions (ask the owner)
Present on site : pets
Non smoking rental, mobile telephone network coverage
Water : hot/cold
Electricity supply : mains
- **Handicapped people welcome**
Fitted out for the disabled : mobility, visually impaired, hard of hearing, mentally



Kitchen Area

Photo album - 1



Seaside



terrace



kitchen



Kitchen Area



kitchen

Photo album - 2



sitting room



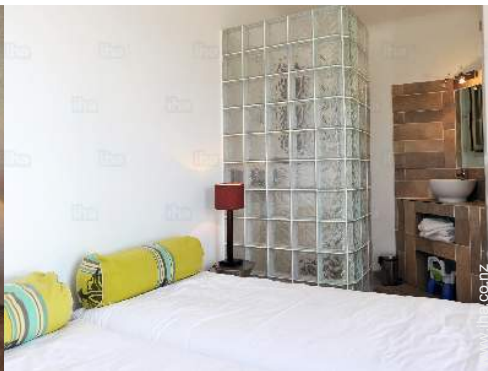
kitchen



suite



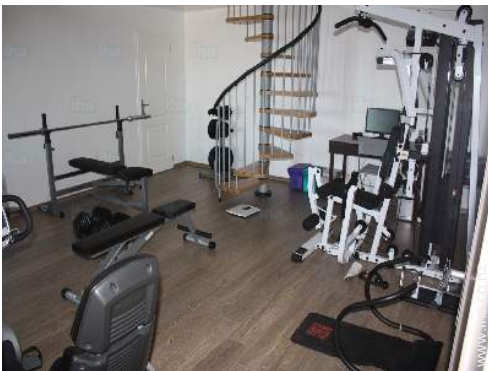
suite



bedroom



Leisure facilities



fitness room



fitness room



ping-pong table



fitness room



pétanque pitch

Location



Location & Access

" Easy access to 20 minutes from Figari airport and 5 minutes from the commercial port of Porto Vecchio (Corsica Linea or Corsica Ferries). "



GPS coordinates in degrees, minutes, seconds: Latitude 41°37'37.49"N - Longitude 9°17'51.49"E (Dwelling)

Address

→ La Vetta Trinité
20137 Porto-Vecchio

• Airport Figari Sud Corse

→ Figari, South Corsica, Corsica, France
→ Distance : 15km
→ Time : 20'

• Sea port Porto Vecchio

→ Porto-Vecchio, South Corsica, Corsica, France
→ Distance : 2,5km
→ Time : 5'

• Bonifacio : (25km)

• Cala Rossa : (7,5km)

• Cappiciolo : (36km)

Contact

Spoken languages



Luxury holiday letting
Porto-Vecchio - France
Luxury Villa

Availability calendar - from : january 2019

Jan	Tu	W	Th	F	Sa	Su	M	Tu	W	Th	F	Sa	Su	M	Tu	W	Th	F	Sa	Su	M	Tu	W	Th							
2019	1	2	3	4	5	6	7	8	9	10	11	12	13	14	15	16	17	18	19	20	21	22	23	24	25	26	27	28	29	30	31
																	-	-	-	-	-	-	-	-	-	-	-	-	-	-	

Feb	F	Sa	Su	M	Tu	W	Th	F	Sa	Su	M	Tu	W	Th	F	Sa	Su	M	Tu	W	Th								
2019	1	2	3	4	5	6	7	8	9	10	11	12	13	14	15	16	17	18	19	20	21	22	23	24	25	26	27	28	
	-	-	-	-	-	-	-	-	-	-	-	-	-	-	-	-	-	-	-	-	-	-	-	-	-	-	-	-	-

Mar	F	Sa	Su	M	Tu	W	Th	F	Sa	Su	M	Tu	W	Th	F	Sa	Su	M	Tu	W	Th	F	Sa	Su							
2019	1	2	3	4	5	6	7	8	9	10	11	12	13	14	15	16	17	18	19	20	21	22	23	24	25	26	27	28	29	30	31
	-	-	-	-	-	-	-	-	-	-	-	-	-	-	-	-	-	-	-	-	-	-	-	-	-	-	-	-	-	-	

Apr	M	Tu	W	Th	F	Sa	Su	M	Tu	W	Th	F	Sa	Su	M	Tu	W	Th	F	Sa	Su	M	Tu	W	Th	F	Sa	Su	M	Tu
2019	1	2	3	4	5	6	7	8	9	10	11	12	13	14	15	16	17	18	19	20	21	22	23	24	25	26	27	28	29	30
	-	-	-	-	-	-	-	-	-	-	-	-	-	-	-	-	-	-	-	-	-	-	-	-	-	-	-	-	-	-

May	W	Th	F	Sa	Su	M	Tu	W	Th	F	Sa	Su	M	Tu	W	Th	F	Sa	Su	M	Tu	W	Th	F	Sa	Su	M	Tu	W	Th	F
2019	1	2	3	4	5	6	7	8	9	10	11	12	13	14	15	16	17	18	19	20	21	22	23	24	25	26	27	28	29	30	31
	-	-	-	-	-	-	-	-	-	-	-	-	-	-	-	-	-	-	-	-	-	-	-	-	-	-	-	-	-	-	-

June	Sa	Su	M	Tu	W	Th	F	Sa	Su	M	Tu	W	Th	F	Sa	Su	M	Tu	W	Th	F	Sa	Su							
2019	1	2	3	4	5	6	7	8	9	10	11	12	13	14	15	16	17	18	19	20	21	22	23	24	25	26	27	28	29	30
	-	-	-	-	-	-	-	-	-	-	-	-	-	-	-	-	-	-	-	-	-	-	-	-	-	-	-	-	-	-

Jul	M	Tu	W	Th	F	Sa	Su	M	Tu	W	Th	F	Sa	Su	M	Tu	W	Th	F	Sa	Su	M	Tu	W	Th	F	Sa	Su	M	Tu	W
2019	1	2	3	4	5	6	7	8	9	10	11	12	13	14	15	16	17	18	19	20	21	22	23	24	25	26	27	28	29	30	31
	-	-	-	-	-	-	-	-	-	-	-	-	-	-	-	-	-	-	-	-	-	-	-	-	-	-	-	-	-	-	-

Aug	Th	F	Sa	Su	M	Tu	W	Th	F	Sa	Su	M	Tu	W	Th	F	Sa	Su	M	Tu	W	Th	F	Sa	Su	M	Tu	W	Th	F	Sa
2019	1	2	3	4	5	6	7	8	9	10	11	12	13	14	15	16	17	18	19	20	21	22	23	24	25	26	27	28	29	30	31
	-	-	-	-	-	-	-	-	-	-	-	-	-	-	-	-	-	-	-	-	-	-	-	-	-	-	-	-	-	-	-

Sep	Su	M	Tu	W	Th	F	Sa	Su	M	Tu	W	Th	F	Sa	Su	M	Tu	W	Th	F	Sa	Su	M	Tu	W	Th	F	Sa	Su	M
2019	1	2	3	4	5	6	7	8	9	10	11	12	13	14	15	16	17	18	19	20	21	22	23	24	25	26	27	28	29	30
	-	-	-	-	-	-	-	-	-	-	-	-	-	-	-	-	-	-	-	-	-	-	-	-	-	-	-	-	-	-

Oct	Tu	W	Th	F	Sa	Su	M	Tu	W	Th	F	Sa	Su	M	Tu	W	Th	F	Sa	Su	M	Tu	W	Th	F	Sa	Su	M	Tu	W	Th
2019	1	2	3	4	5	6	7	8	9	10	11	12	13	14	15	16	17	18	19	20	21	22	23	24	25	26	27	28	29	30	31
	-	-	-	-	-	-	-	-	-	-	-	-	-	-	-	-	-	-	-	-	-	-	-	-	-	-	-	-	-	-	



Availability calendar - from : october 2019

Nov	F	Sa	Su	M	Tu	W	Th	F	Sa	Su	M	Tu	W	Th	F	Sa	Su	M	Tu	W	Th	F	Sa							
2019	1	2	3	4	5	6	7	8	9	10	11	12	13	14	15	16	17	18	19	20	21	22	23	24	25	26	27	28	29	30
	-	-	-	-	-	-	-	-	-	-	-	-	-	-	-	-	-	-	-	-	-	-	-	-	-	-	-	-	-	

Dec	Su	M	Tu	W	Th	F	Sa	Su	M	Tu	W	Th	F	Sa	Su	M	Tu	W	Th	F	Sa	Su	M	Tu							
2019	1	2	3	4	5	6	7	8	9	10	11	12	13	14	15	16	17	18	19	20	21	22	23	24	25	26	27	28	29	30	31
	-	-	-	-	-	-	-	-	-	-	-	-	-	-	-	-	-	-	-	-	-	-	-	-	-	-	-	-	-	-	

[Month : Next >>](#)

Rental rates - Luxury Villa - from 1 to 9 Person(s)

Rates	Night	Weekend	week	2 weeks	Month
■ Low season	-	-	NZ\$5150* <i>(Saturday)</i>	NZ\$8583*	-
■ Mid season	-	-	NZ\$6866* <i>(Saturday)</i>	NZ\$11158* <i>(Saturday)</i>	-
■ High season	-	-	NZ\$12016* <i>(Saturday)</i>	-	-

(Check-in day)

[Book now](#)

Booking conditions

- **Reservation**
 - Payment made upon reservation : 30% of rental sum
 - Payment balance : on handing over the keys
 - Deposit required : NZ\$4291*
- **rentals**
 - Service charges included
 - Day tax included
 - Cleaning charge on departure included

[▶ Book now](#)

[▶ Contact the owner](#)

Contact

Spoken languages 

Accepted methods of payment

- Bank transfer (wire) • Bankers draft • Cash

Contact directly the property owners

www.iha.co.nz
Advert No.
57960
[>> Book now <<](#)

* Converted at the rate indicated : €100 = \$116.85 = £89 = NZ\$171.66

Advert No. 57960

www.iha.co.nz

