

# Luxury holiday letting Athens Central Luxury Penthouse

A modern 107 sq.m cozy penthouse maisonette, with private parking, in a quiet residential area. 15m walk from ancient sites, museums, posh cafes, restaurants, bars, clubs & cultural events. Also perfect to business travelers!



**Luxury Penthouse** 5th floor, separate entrance, in a(an) Modern block of flats 5 floors

Setting : cultural, urban

Capacity : from 1 to 4 person(s)

Bedroom(s) : 2

Room(s) : 3



Gay friendly ()  
Family Holiday Destinations ()

Athens Central - Athens - Attica

Greece

Advert No. 50834

[www.iha.co.nz](http://www.iha.co.nz)



>> HOLIDAY LETTINGS

BOOK DIRECT WITH THE OWNERS

### Luxury holiday letting



Luxury Penthouse 5th floor, separate entrance, in a(an) Modern block of flats 5 floors

- **Ideal for all age groups, singles**
- **View :** town, rooftop
- **Setting :** cultural, urban
- **Exposure :** West

" This nicely decorated 107 sq.m residence is originally offered at the stated prices strictly for 2 people, but can host even up to 7 people if requested, for an extra cost per person per day depending on the season. 1 Child up to 12 y.o. is free and a security deposit is required. For more specific details, booking & pricing, you are welcome to ask. This maisonette that will be to your complete disposal, is secluded and practically positioned on the building's top 4th and 5th floors, allowing for extra private use and peaceful staying. It consists of a fully furnished and spacious living room, a large kitchen, WC and two separate balconies on the lower floor, while on the top floor there is a big bedroom, one slightly smaller one, the main bathroom and a rather large balcony running all along the face of the building. The apartment was only recently renovated and upgraded with exceptional high standard glass windows and doors, that isolate city sounds and insulate from extreme weather. You will also find a solar panel for hot water, air conditioning in all the rooms, fast internet, WiFi, TVs, a fully equipped kitchen with cooking appliances and lots more. "

### Assets

- **Parking :**  
Parking uncovered : 1 internal.

### Surroundings & location



City



Festival



Culture

" The apartment is situated in the heart of the cultural center of Athens. The building is young, small but cozy, friendly, clean, our surrounding neighborhood is safe and belongs to one of the oldest and chic central Athenian sectors. By just taking nice long walks around, you can find many beautiful classical and neoclassical houses and buildings from the prestigious Athenian past. There are many traditional Greek restaurants and 'tavernas' in the area, where great quality delicious local food can be enjoyed. Hidden gems that mostly locals know of... The same goes for the numerous bars and music halls, which are well known not only for their progressive style and music, but also for their classic flavor. They are the favorites of all ages. But there are many more things to explore and do in the center of Athens! For example, you can have an adrenaline and imagination rush by visiting exciting Escape-Rooms, walk, shop and have a typical Greek coffee in the neighboring prestigious Kolonaki district, visit the fabulous nearby National Archaeological Museum, or go all the way to the top of our own Lycabettus hill either on foot, by car, or the lovely local funicular, for a phenomenally panoramic view of Athens, Piraeus, the Med sea and of many more interesting sites! "

### Leisure

- **Leisure activities less than 20 km / 12 miles :**

Ice-skating, bathing, pedalo, snorkelling, banana boat, water skiing, jet ski, sailing, kite surfing, canyoning, golf, tennis, squash, riding school, pathway, coastal/forest paths, hiking, mountain bike (path), kite flying, flying (club), boat trips, horse-drawn carriage, mini-golf, rollerblade/rollerskate (circuit), skate board (ramps), go-karting, RC modelling track, ten-pin bowling, basketball, volleyball

- **Supervised :**

Sailing school, dive school, tennis school, riding school

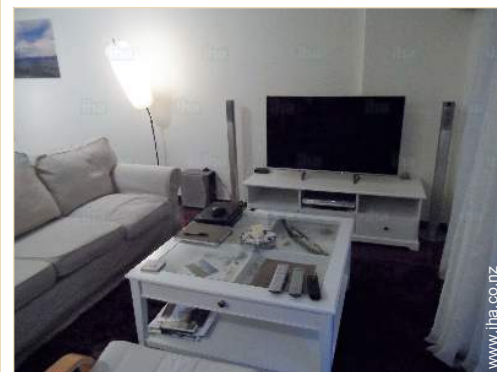
- **Attractions and relaxation :**

Bar/pub, discotheque, restaurant, cinema, open air summer cinema, park and garden, leisure park, zoo/animal park, exhibition centre, art gallery, historical site, museum, theatre, summer theatre, opera house, festivals, antiques & bric-a-brac, local craftshop, cellar and wine tasting, sauna, steam baths, health farm, beauticians, fitness centre

### Surroundings

- **Amenities :**  
Nursery 300m

- Town centre 1km
- Bus stop / bus station <50m
- Tube station 800m
- Tramway system 2km
- Bus pick up point beach 500m
- Ski bus pick up point 1,5km
- Scooter/motorbike hire 1km
- Car rental 1km
- Household linens for hire/laundry services 100m
- Breadshop 100m
- Caterer 100m
- Local shops 50m
- Supermarket 100m
- High class retailers 800m
- Hairdressing salon 300m
- Internet cafe 100m
- Post office 500m
- Bank 100m
- Cash point 100m
- Chemist <50m
- Doctor 200m
- Nurse 200m
- Hospital 200m



living room



dining room



dining room

### Interior

- **Receive up to :**  
from 1 to 4 person(s)
- **Liveable floor area :**  
100m<sup>2</sup>
- **Interior layout :**  
3 Room(s), 2 bedroom(s), 1 bathroom, 1 shower room, 2 WC, living room 20m<sup>2</sup>, sitting room 20m<sup>2</sup>, large separate kitchen, dining room, dining area, cosy nook, tv room, bar area, dressing room, study, work studio, veranda, loggia
- **Sleeps - bed(s) :**  
1 king-size bed(s), 1 single bed(s), 3 possible extra bed(s)
- **Guest facilities :**  
Lift, T.V., home cinema, hi-fi system, film collection, t.v points, cable/satellite, high speed internet access, wifi, wardrobe, cupboard, Hanging wardrobe, safe deposit box, hair dryer, fly screens, fully air conditioned, central heating, Curtains, Blinds, Double glazed, electric shutters, entry phone system, burglar alarm
- **Appliances :**  
Crockery/cutlery, kitchen utensils, electric coffee maker, toaster, food processor, meat grill, electric cooker, oven, micro-wave oven, extractor hood, refrigerator, freezer, dish washer, washing machine, vacuum cleaner, iron, ironing board

### Exterior

- **Ground surface :**  
100m<sup>2</sup>
- **Outside accommodation :**  
Balcony 40m<sup>2</sup>, sundeck 40m<sup>2</sup>
- **Outside amenities :**  
Garden table(s), 4 garden seat(s), 2 sun recliner(s)



view from the balcony

### Services

- **Washing :**  
Sheets supplement (1 X / per week +NZ\$8\*), Towels supplement (1 X / per week +NZ\$8\*), Linen supplement (1 X / per week +NZ\$16\*), Blanket(s), Quilt(s), Pillows
- **House :**  
Cleaning supplement (1 X / per week + NZ\$39\*), Cleaning on departure, Parking, Airport transfers supplement (+NZ\$39\*)
- **Personnel :**  
Chauffeur supplement, Laundry supplement, Baby sitting supplement, Beauty treatments supplement, Massage supplement, Guide supplement

### For your guidance

- **For your guidance**  
Children welcome  
Pets accepted under certain conditions (ask the owner)  
Mobile telephone network coverage, personal transport advisable  
Water : hot/cold  
Local voltage supply : 220-240V / 50Hz  
Electricity supply : mains
- **Handicapped people welcome**  
Wheelchair access  
Fitted out for the disabled : visually impaired, hard of hearing, mentally



view from the sitting-room



Photo album - 1



dining room



living room



dining room



view from the sitting-room



view from the balcony

Photo album - 2



Kitchen Area



WC



large separate kitchen



dining area



Interior layout and facilities



Interior layout



owner's bedroom



Photo album - 3



owner's bedroom



sundeck



bathroom



shower room



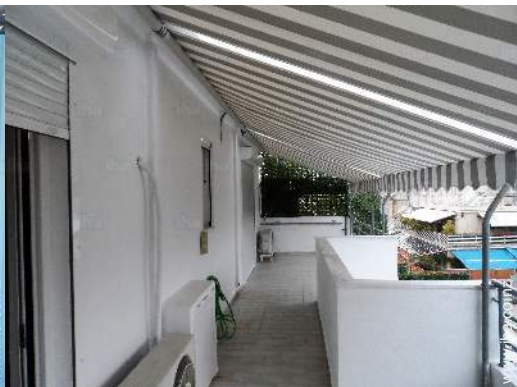
washing machine



guest bedroom

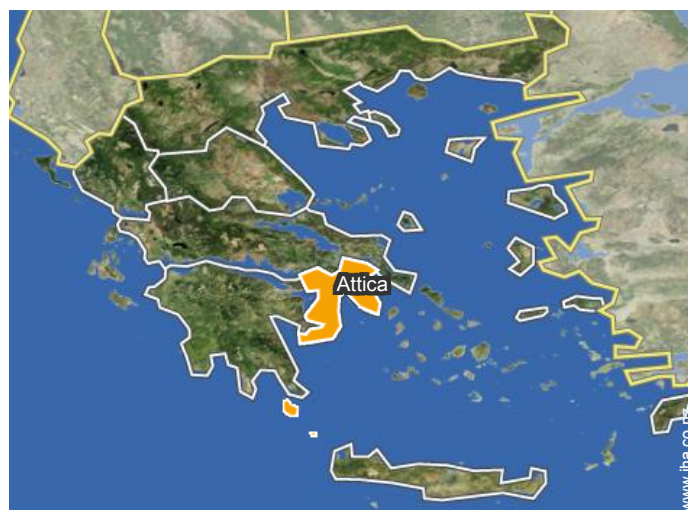


ironing board




sundeck

### Location



### Location & Access

" You will find that in this part of the city transportation is quite easy, available and swift! Buss stations are no further than 100 meters away, Athens metro is just 7-10 minutes walk, a taxi can always be found within just a few minutes on the main road right behind our apartment and of course, parking is not an issue, as we provide you with your own parking space at the very building you will be staying! "

 GPS coordinates in degrees, minutes, seconds: Latitude 37°59'8"N - Longitude 23°44'27"E ([Dwelling](#))

#### Address

→ Τηλεμάχου 22  
114 72 Athens Central

#### • Airport Athens Elefthérios Venizélos

→ Athens Central, Athens, Attica, Greece  
→ Distance : 42km  
→ Time : 40'

#### • Sea port Piraeus

→ Piraeus, Prefecture of Piraeus, Attica, Greece  
→ Distance : 11km  
→ Time : 30'

#### • Motorway (junction) E75 exit at-into Leof. Athinon

→ Athens Central, Athens, Attica, Greece  
→ Distance : 5km  
→ Time : 15'

#### • Rafina : (41km)

• Piraeus : (11km)

• Sounion : (70km)

### Contact

Spoken languages




# Luxury holiday letting Athens - Attica Luxury Penthouse

[Book now](#)

## Availability calendar - from : december 2017

Dec	F	Sa	Su	M	Tu	W	Th	F	Sa	Su	M	Tu	W	Th	F	Sa	Su	M	Tu	W	Th	F	Sa	Su							
2017	1	2	3	4	5	6	7	8	9	10	11	12	13	14	15	16	17	18	19	20	21	22	23	24	25	26	27	28	29	30	31
Jan	M	Tu	W	Th	F	Sa	Su	M	Tu	W	Th	F	Sa	Su	M	Tu	W	Th	F	Sa	Su	M	Tu	W	Th	F	Sa	Su	M	Tu	W
2018	1	2	3	4	5	6	7	8	9	10	11	12	13	14	15	16	17	18	19	20	21	22	23	24	25	26	27	28	29	30	31
Feb	Th	F	Sa	Su	M	Tu	W	Th	F	Sa	Su	M	Tu	W	Th	F	Sa	Su	M	Tu	W	Th	F	Sa	Su	M	Tu	W			
2018	1	2	3	4	5	6	7	8	9	10	11	12	13	14	15	16	17	18	19	20	21	22	23	24	25	26	27	28			
Mar	Th	F	Sa	Su	M	Tu	W	Th	F	Sa	Su	M	Tu	W	Th	F	Sa	Su	M	Tu	W	Th	F	Sa	Su	M	Tu	W	Th	F	Sa
2018	1	2	3	4	5	6	7	8	9	10	11	12	13	14	15	16	17	18	19	20	21	22	23	24	25	26	27	28	29	30	31
Apr	Su	M	Tu	W	Th	F	Sa	Su	M	Tu	W	Th	F	Sa	Su	M	Tu	W	Th	F	Sa	Su	M	Tu	W	Th	F	Sa	Su	M	
2018	1	2	3	4	5	6	7	8	9	10	11	12	13	14	15	16	17	18	19	20	21	22	23	24	25	26	27	28	29	30	
May	Tu	W	Th	F	Sa	Su	M	Tu	W	Th	F	Sa	Su	M	Tu	W	Th	F	Sa	Su	M	Tu	W	Th	F	Sa	Su	M	Tu	W	Th
2018	1	2	3	4	5	6	7	8	9	10	11	12	13	14	15	16	17	18	19	20	21	22	23	24	25	26	27	28	29	30	31
June	F	Sa	Su	M	Tu	W	Th	F	Sa	Su	M	Tu	W	Th	F	Sa	Su	M	Tu	W	Th	F	Sa	Su	M	Tu	W	Th	F	Sa	
2018	1	2	3	4	5	6	7	8	9	10	11	12	13	14	15	16	17	18	19	20	21	22	23	24	25	26	27	28	29	30	
Jul	Su	M	Tu	W	Th	F	Sa	Su	M	Tu	W	Th	F	Sa	Su	M	Tu	W	Th	F	Sa	Su	M	Tu	W	Th	F	Sa	Su	M	Tu
2018	1	2	3	4	5	6	7	8	9	10	11	12	13	14	15	16	17	18	19	20	21	22	23	24	25	26	27	28	29	30	31
Aug	W	Th	F	Sa	Su	M	Tu	W	Th	F	Sa	Su	M	Tu	W	Th	F	Sa	Su	M	Tu	W	Th	F	Sa	Su	M	Tu	W	Th	F
2018	1	2	3	4	5	6	7	8	9	10	11	12	13	14	15	16	17	18	19	20	21	22	23	24	25	26	27	28	29	30	31
Sep	Sa	Su	M	Tu	W	Th	F	Sa	Su	M	Tu	W	Th	F	Sa	Su	M	Tu	W	Th	F	Sa	Su	M	Tu	W	Th	F	Sa	Su	
2018	1	2	3	4	5	6	7	8	9	10	11	12	13	14	15	16	17	18	19	20	21	22	23	24	25	26	27	28	29	30	

 Low season





Luxury holiday letting  
Athens Central - Greece  
**Luxury Penthouse**

9

[Book now](#)

Availability calendar - from : september 2018




Oct	M	Tu	W	Th	F	Sa	Su	M	Tu	W	Th	F	Sa	Su	M	Tu	W	Th	F	Sa	Su	M	Tu	W							
2018	1	2	3	4	5	6	7	8	9	10	11	12	13	14	15	16	17	18	19	20	21	22	23	24	25	26	27	28	29	30	31

Nov	Th	F	Sa	Su	M	Tu	W	Th	F	Sa	Su	M	Tu	W	Th	F	Sa	Su	M	Tu	W	Th	F							
2018	1	2	3	4	5	6	7	8	9	10	11	12	13	14	15	16	17	18	19	20	21	22	23	24	25	26	27	28	29	30

 Low season

[Month : Next >>](#)

Rental rates - Luxury Penthouse - from 1 to 4 Person(s)

Rates	Night	Weekend	week	2 weeks	Month
 Low season	NZ\$78* > 5	-	NZ\$549*	NZ\$1099*	NZ\$2197*
 Mid season	NZ\$94* > 5	-	NZ\$659*	NZ\$1318*	NZ\$2637*
 High season	NZ\$126* > 5	-	NZ\$879*	NZ\$1758*	NZ\$3516*

> Minimum Night

[Book now](#)

Booking conditions

• **Reservation**

→ Payment made upon reservation :  
30% of rental sum  
→ Payment balance :  
1 day before the stay

• **rentals**

→ Service charges included  
→ Day tax included  
→ Cleaning charge on departure included  
→ Anticipated supplement for :  
- supplementary bed(s)

[▶ Book now](#)

[▶ Contact the owner](#)

Accepted methods of payment

• Bank transfer (wire) • PayPal • Cash

Contact directly the property owners

[www.iha.co.nz](http://www.iha.co.nz)

Advert No.

50834

[>> Book now <<](#)

Contact

Spoken languages



\* Converted at the rate indicated : €100 = \$117.29 = £89.59 = NZ\$156.95

Advert No. 50834

[www.iha.co.nz](http://www.iha.co.nz)



[>> HOLIDAY LETTINGS](#)

BOOK DIRECT WITH THE OWNERS