

Holiday lettings Tel Aviv Penthouse



Penthouse 4th floor, shared entrance,
in a(an) Apartment block 4 floors

Setting : quiet, romantic

Capacity : from 2 to 10 person(s)

Bedroom(s) : 5

Room(s) : 6



Meublés de Tourisme (5 stars)

Israel

Advert No. 18565

Tel Aviv

Reservation : +33 (0) 1 47 95 00 95 (France)

www.iha.co.nz



>> HOLIDAY LETTINGS

BOOK DIRECT WITH THE OWNERS

Holiday lettings



Penthouse 4th floor, shared entrance, in a (an) Apartment block 4 floors

- **Ideal for large families, all age groups**
- **View :** panoramic, unobscured, not overlooked, rooftop
- **Setting :** quiet, romantic
- **Exposure :** South-west

Assets

- **Parking :**
Parking uncovered : 2 reserved bay.

Benefits :
Direct access to the beach



terrace

Surroundings & location



Seaside



Fishing

Leisure

- **Leisure activities less than 20 km / 12 miles :**

Bathing, snorkelling, scuba diving, water skiing, windsurfing, parascending, boat trips, angling, pétanque pitch

- **Attractions and relaxation :**

Bar/pub, discotheque, restaurant, cinema, karaoke, park and garden, art gallery, historical site, museum, theatre, local craftshop, natural spring baths, sauna, steam baths, fitness centre

Surroundings

- **Locality :**

Sandy beach 300m
Public swimming pool 500m

- **Amenities :**

Town centre 300m
Bus stop / bus station 300m
Bike/mountain bike hire 500m
Car rental 500m
Breadshop 500m
Caterer 500m
Local shops 300m
Supermarket 500m
Hairdressing salon 300m
Internet cafe 300m
Post office 500m
Bank 300m
Cash point 300m
Chemist 500m
Doctor 300m
Hospital 2km



block of flats



terrace



Kitchen Area

Exterior

- **Outside accommodation :**
Terrace 45m², balcony 10m²
- **Outside amenities :**
Gas BBQ, garden table(s), 8 garden seat(s), parasol, garden seated area, 6 chaise(s) longue(s), sun lounge



Kitchen Area

Interior

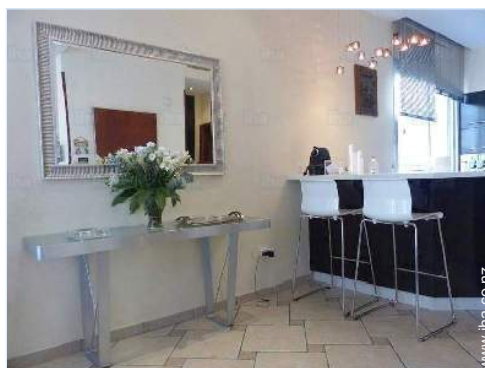
- **Receive up to :**
from 2 to 10 person(s) (10 adults)
- **Liveable floor area :**
180m²
- **Interior layout :**
6 Room(s), 5 bedroom(s), 3 shower room, 2 WC, living room 50m², sitting room 30m², large american style kitchen, dining room, dining area
- **Sleeps - bed(s) :**
3 double bed(s), 1 king-size bed(s), 2 single bed(s), 1 baby cot(s)
- **Guest facilities :**
Lift, T.V., DVD player, t.v points, cable/satellite, wifi, wardrobe, Hanging wardrobe, fully air conditioned, mobile cool air fan, central heating, Glazed in area, Curtains, Blinds, Double glazed, Rolling shutters, entry phone system, digipad entry system
- **Appliances :**
Crockery/cuttlery, kitchen utensils, cafetiere, electric coffee maker, electric espresso coffee maker, electric kettle, toaster, electric hobs, oven, micro-wave oven, extractor hood, refridgerator, freezer, dish washer, washing machine, clothes dryer, vacuum cleaner, iron, ironing board

Services

- **Washing :**
Sheets, Towels, Linen, Beach towels, Quilt (s), Pillows
- **House :**
Parking

For your guidance

- **For your guidance**
Children welcome
No pet allowed
Non smoking rental, mobile telephone network coverage
Water : hot/cold
Local voltage supply : 220V / 60Hz
Electricity supply : mains



living room

Photo album - 1



terrace



terrace



block of flats



Kitchen Area



living room

Photo album - 2



Kitchen Area



Kitchen Area



dining room



sitting room



sitting room



living room



sitting room



infants bedroom

Photo album - 3



guest bedroom

bedroom

master bedroom



master bedroom

master bedroom

master bedroom

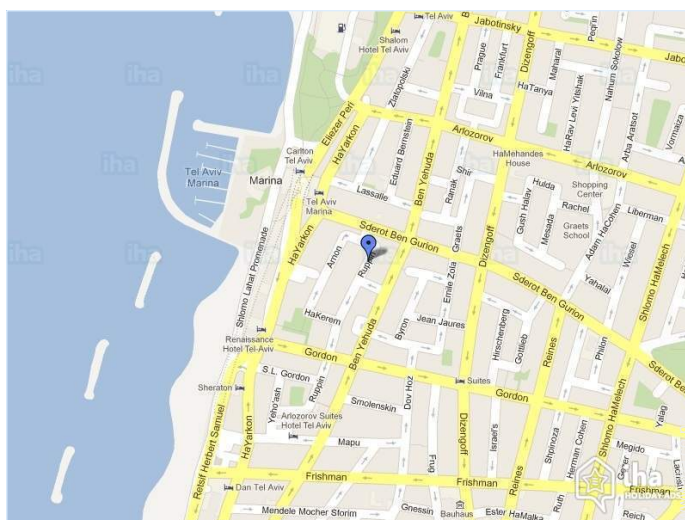


shower room

shower room

shower room

Route map



Location & Access



GPS coordinates in degrees, minutes, seconds: Latitude 32° 5'5"N - Longitude 34°46'18"E (Dwelling)

Address

→ 49 rue Ruppiner
63435 Tel Aviv

• Motorway (junction) Orlozorov

→ Tel Aviv, Israel
→ Distance : 5km
→ Time : 15'

• Coach station Raquevet

→ Tel Aviv, Israel
→ Distance : 5km
→ Time : 15'

• Airport Ben Gurion

→ Tel Aviv, Israel
→ Distance : 20km
→ Time : 20'

• Ramat Gan : (7,5km)

• Lod : (22km)

• Netanya : (36km)

Contact

Spoken languages



Location



Holiday lettings Tel Aviv - Israel Penthouse

[Book now](#)

Availability calendar - from : april 2019

Apr	M	Tu	W	Th	F	Sa	Su	M	Tu	W	Th	F	Sa	Su	M	Tu	W	Th	F	Sa	Su	M	Tu	
2019	1	2	3	4	5	6	7	8	9	10	11	12	13	14	15	16	17	18	19	20	21	22	23	24

May	W	Th	F	Sa	Su	M	Tu	W	Th	F	Sa	Su	M	Tu	W	Th	F	Sa	Su	M	Tu	W	Th	F
2019	1	2	3	4	5	6	7	8	9	10	11	12	13	14	15	16	17	18	19	20	21	22	23	24
	-	-	-	-	-	-	-	-	-	-	-	-	-	-	-	-	-	-	-	-	-	-	-	-

June	Sa	Su	M	Tu	W	Th	F	Sa	Su	M	Tu	W	Th	F	Sa	Su	M	Tu	W	Th	F	Sa	Su
2019	1	2	3	4	5	6	7	8	9	10	11	12	13	14	15	16	17	18	19	20	21	22	23
	-	-	-	-	-	-	-	-	-	-	-	-	-	-	-	-	-	-	-	-	-	-	-

Jul	M	Tu	W	Th	F	Sa	Su	M	Tu	W	Th	F	Sa	Su	M	Tu	W	Th	F	Sa	Su	M	Tu	W
2019	1	2	3	4	5	6	7	8	9	10	11	12	13	14	15	16	17	18	19	20	21	22	23	
	-	-	-	-	-	-	-	-	-	-	-	-	-	-	-	-	-	-	-	-	-	-	-	-

Aug	Th	F	Sa	Su	M	Tu	W	Th	F	Sa	Su	M	Tu	W	Th	F	Sa	Su	M	Tu	W	Th	F	Sa
2019	1	2	3	4	5	6	7	8	9	10	11	12	13	14	15	16	17	18	19	20	21	22	23	
	-	-	-	-	-	-	-	-	-	-	-	-	-	-	-	-	-	-	-	-	-	-	-	-

Sep	Su	M	Tu	W	Th	F	Sa	Su	M	Tu	W	Th	F	Sa	Su	M	Tu	W	Th	F	Sa	Su	M
2019	1	2	3	4	5	6	7	8	9	10	11	12	13	14	15	16	17	18	19	20	21	22	23
	-	-	-	-	-	-	-	-	-	-	-	-	-	-	-	-	-	-	-	-	-	-	-

Oct	Tu	W	Th	F	Sa	Su	M	Tu	W	Th	F	Sa	Su	M	Tu	W	Th	F	Sa	Su	M	Tu	W	Th
2019	1	2	3	4	5	6	7	8	9	10	11	12	13	14	15	16	17	18	19	20	21	22	23	
	-	-	-	-	-	-	-	-	-	-	-	-	-	-	-	-	-	-	-	-	-	-	-	-

Nov	F	Sa	Su	M	Tu	W	Th	F	Sa	Su	M	Tu	W	Th	F	Sa	Su	M	Tu	W	Th	F	Sa
2019	1	2	3	4	5	6	7	8	9	10	11	12	13	14	15	16	17	18	19	20	21	22	23
	-	-	-	-	-	-	-	-	-	-	-	-	-	-	-	-	-	-	-	-	-	-	-

Dec	Su	M	Tu	W	Th	F	Sa	Su	M	Tu	W	Th	F	Sa	Su	M	Tu	W	Th	F	Sa	Su	M	Tu
2019	1	2	3	4	5	6	7	8	9	10	11	12	13	14	15	16	17	18	19	20	21	22	23	
	-	-	-	-	-	-	-	-	-	-	-	-	-	-	-	-	-	-	-	-	-	-	-	-

Jan	W	Th	F	Sa	Su	M	Tu	W	Th	F	Sa	Su	M	Tu	W	Th	F	Sa	Su	M	Tu	W	Th	F
2020	1	2	3	4	5	6	7	8	9	10	11	12	13	14	15	16	17	18	19	20	21	22	23	
	-	-	-	-	-	-	-	-	-	-	-	-	-	-	-	-	-	-	-	-	-	-	-	-



Holiday lettings Tel Aviv - Israel Penthouse

10
[Book now](#)






Availability calendar - from : january 2020

Feb	Sa	Su	M	Tu	W	Th	F	Sa	Su	M	Tu	W	Th	F	Sa	Su	M	Tu	W	Th	F	Sa	Su	M	Tu	W	Th	F	Sa
2020	1	2	3	4	5	6	7	8	9	10	11	12	13	14	15	16	17	18	19	20	21	22	23	24	25	26	27	28	29
-	-	-	-	-	-	-	-	-	-	-	-	-	-	-	-	-	-	-	-	-	-	-	-	-	-	-	-	-	-

Mar	Su	M	Tu	W	Th	F	Sa	Su	M	Tu	W	Th	F	Sa	Su	M	Tu	W	Th	F	Sa	Su	M	Tu	W	Th	F	Sa	Su	M	Tu
2020	1	2	3	4	5	6	7	8	9	10	11	12	13	14	15	16	17	18	19	20	21	22	23	24	25	26	27	28	29	30	31
-	-	-	-	-	-	-	-	-	-	-	-	-	-	-	-	-	-	-	-	-	-	-	-	-	-	-	-	-	-	-	-

[Month : Next >>](#)

Rental rates - Penthouse - from 2 to 10 Person(s)

Rates	Night	Weekend	week	2 weeks	Month
 Low season	-	-	NZ\$3262*	-	-
 Mid season	-	-	NZ\$4034*	-	-
 High season	-	-	NZ\$5321*	-	-
 Festive specials	-	-	NZ\$4206*	-	-
 Promotional period	-	-	NZ\$3004*	-	-

[Book now](#)

Booking conditions

• Reservation

- Payment made upon reservation : 30% of rental sum
- Payment balance : on handing over the keys
- Deposit required : NZ\$2575*

• rentals

- Service charges included
- Day tax included
- Cleaning charge levy on departure : NZ\$103*

[▶ Book now](#)

[▶ Contact the owner](#)

Accepted methods of payment

- Bank transfer (wire) • Cash

Contact directly the property owners

www.iha.co.nz
Advert No.
18565
[>> Book now <<](#)

Contact

Spoken languages



* Converted at the rate indicated : €100 = \$116.85 = £89 = NZ\$171.66

Advert No. 18565

www.iha.co.nz

