

# Holiday lettings Seririt "Villa Caraka"



Villa, detached, 1 floor, separate entrance, in a(an) Private estate

Setting : heavenly, seaside

Capacity : 10 person(s)

Bedroom(s) : 4

Room(s) : 4

Seririt - Bali - Sunda Islands

Indonesia

Reservation : +31 (0) 72 5092976 (Netherlands)

Advert No. 22312

www.iha.co.nz



>> HOLIDAY LETTINGS

BOOK DIRECT WITH THE OWNERS

## Holiday lettings



Villa, detached, 1 floor, separate entrance, in a(an) Private estate

- **Ideal for family, retired people**
- **View :** panoramic, not overlooked, sea/ocean, mountain, swimming pool, garden/park
- **Setting :** heavenly, seaside
- **Exposure :** North

## Assets

- **Swimming pool :**  
Private swimming-pool, rectangular (length 18m, width 6m), cascading, illuminated, steps in, outside shower (open from '01 january' till '31 december')
- **Parking :**  
Covered parking : 2 carport.
- **Advantages :**  
Massage table, 2 snorkelling equipment, courtesy car, motor boat
- **baby equipment :**  
Baby chair, baby changer, baby potty, playpen

**Benefits :**  
Direct access to the beach

## Surroundings & location



### Leisure

- **Leisure activities less than 20 km / 12 miles :**

Bathing, snorkelling, scuba diving, scuba diving (Standard diving dress), surfing, windsurfing, kite surfing, canyoning, rafting, tennis, riding school, hiking, mountain bike (path), horse trekking, fishing, deep-sea angling

- **Supervised :**

Dive school, riding school

### Surroundings

- **Locality :**

Sea/ocean <50m  
Sandy beach <50m  
18 hole golf course 20km  
Windsurfing spots 25km  
Surfing spots 25km  
Stretch of water <50m



View



view from the terrace



north-westerly view

### Exterior

- **Ground surface :**  
5000m<sup>2</sup>
- **Outside accommodation :**  
Terrace 100m<sup>2</sup>, covered terrace 40m<sup>2</sup>, balcony 20m<sup>2</sup>, sundeck 50m<sup>2</sup>, gazebo, garden shed
- **Outside setting :**  
Enclosed grounds 5000m<sup>2</sup>, garden > 1000m<sup>2</sup>, tropical garden > 1000m<sup>2</sup>, lawn > 1000m<sup>2</sup>, orchard 100m<sup>2</sup>, natural pools, wells/spring, fountain
- **Outside amenities :**  
Summer living area, garden table(s), 8 garden seat(s), trolley on wheels, parasol, 8 chaise(s) longue(s), outside shower facilities



southerly view

### Interior

- **Receive up to :**  
10 person(s) (8 adults, 2 children)
- **Liveable floor area :**  
280m<sup>2</sup>
- **Interior layout :**  
4 Room(s), 4 bedroom(s), 4 shower room, living room 50m<sup>2</sup>, dining area, dressing room
- **Sleeps - bed(s) :**  
3 super king-size bed(s), 2 single bed(s), 1 folding bed(s) 1 pers, 1 baby cot(s)
- **Guest facilities :**  
T.V., home cinema, hi-fi system, DVD player, board games, book collection, film collection, telephone, cable/satelite, internet access, wifi, wardrobe, cupboard, hair dryer, mosquito nets, partly air conditioned, ceiling paddle fan, Curtains, remote controlled gates
- **Appliances :**  
Crockery/cuttlery, kitchen utensils, cafetiere, electric coffee maker, electric kettle, toaster, juicer, food processor, gas cooker, mini-oven, micro-wave oven, refridgerator, freezer, ice maker, washing machine, clothes dryer, vacuum cleaner, iron, ironing board

### Services

- **Washing :**  
Sheets (2 X / per week), Towels, Linen, Beach towels (2 X / per week), Quilt(s), Pillows
- **House :**  
Cleaning (6 X / per week), Cleaning on departure, Garden/swimming pool maintenance (6 X / per week), Caretaker/concierge, Parking, Airport transfers supplement
- **Personnel :**  
Staff, Chef(s), Chauffeur supplement, Baby sitting supplement, Beauty treatments supplement, Massage supplement, Guide supplement
- **Restauration :**  
Breakfast supplement, BBQ meal supplement, Half board supplement, Full board supplement, Locally produced meals supplement, Picnic basket supplement



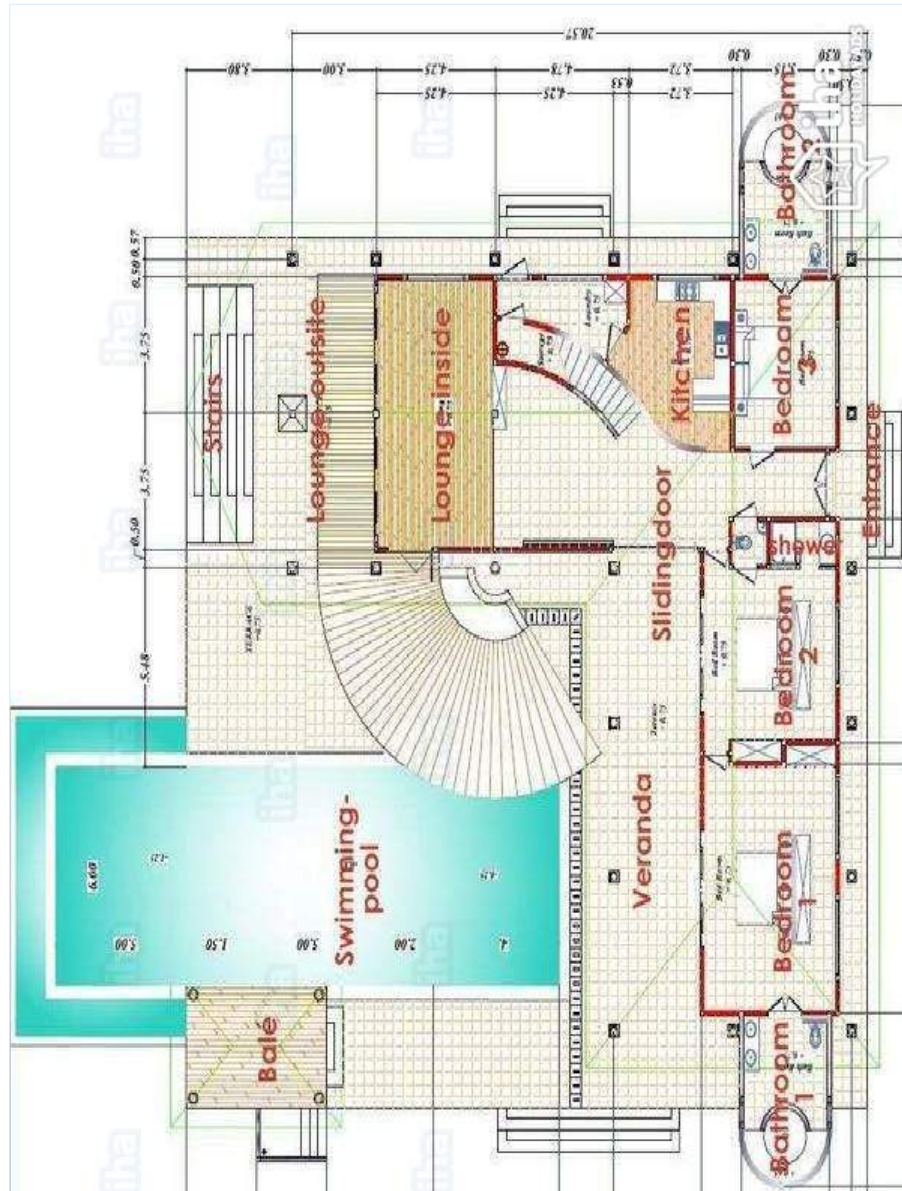
northerly view

### For your guidance

- **For your guidance**  
Children welcome  
No pet allowed  
Mobile telephone network coverage  
Water : hot/cold  
Local voltage supply : 220-240V / 50Hz  
Electricity supply : mains



Floor plan



[www.iha.co.nz](http://www.iha.co.nz)

Photo album - 1



view from the terrace



View



north-westerly view



northerly view



southerly view



Photo album - 2



view from the bedroom



garden/park view



tropical garden



interior



Interior layout and facilities



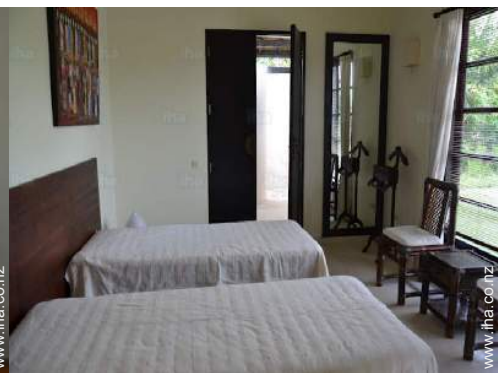
terrace



view over the sea

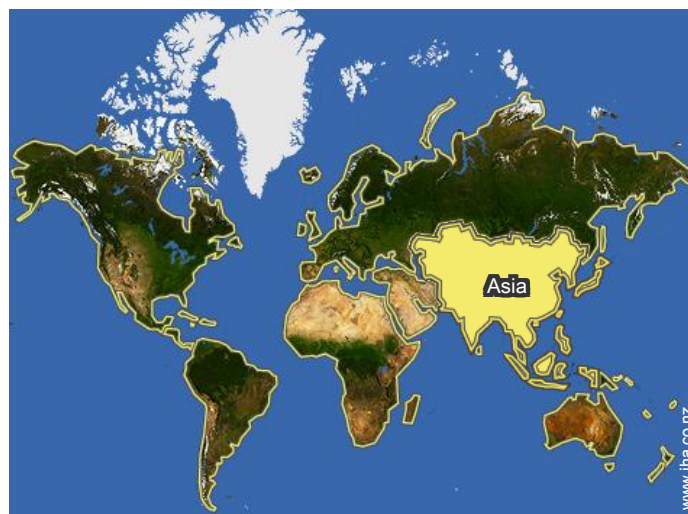
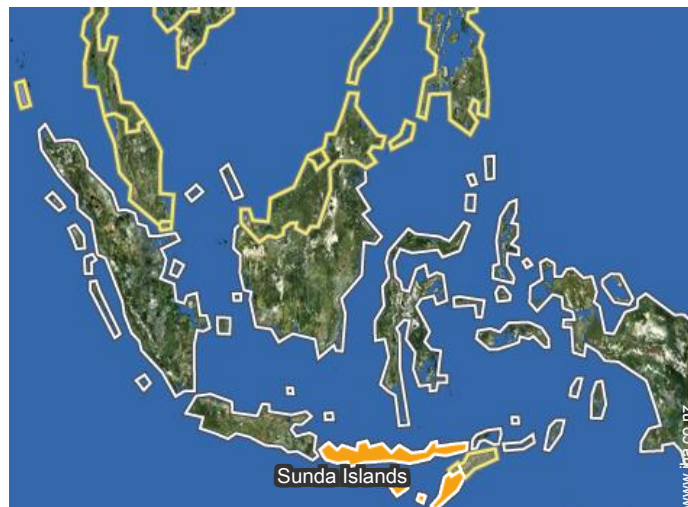


large bedroom



guest bedroom

### Location



### Location & Access



GPS coordinates in degrees, minutes, seconds: Latitude 8°10'59"S - Longitude 114°55'21"E (Dwelling)

#### Address

→ Jalan Mawar 10  
Lokapaksa  
81153 Seririt

#### • Airport Denpasar Ngurah Rai

→ Denpasar, Bali, Sunda Islands,  
Indonesia  
→ Distance : 70km

#### • Sea port Gilimanuk

→ Gilimanuk, Bali, Sunda Islands,  
Indonesia  
→ Distance : 75km

• Lovina Beach : (7,5km)

### Contact

Spoken  
languages



# Holiday lettings Bali - Sunda Islands "Villa Caraka"

[Book now](#)

## Availability calendar - from : march 2018

Mar	Th	F	Sa	Su	M	Tu	W	Th	F	Sa	Su	M	Tu	W	Th	F	Sa	Su	M	Tu	W	Th	F	Sa	Su	M	Tu	W	Th	F	Sa
2018	1	2	3	4	5	6	7	8	9	10	11	12	13	14	15	16	17	18	19	20	21	22	23	24	25	26	27	28	29	30	31
																					-	-	-	-	-	-	-	-	-	-	-

Apr	Su	M	Tu	W	Th	F	Sa	Su	M	Tu	W	Th	F	Sa	Su	M	Tu	W	Th	F	Sa	Su	M							
2018	1	2	3	4	5	6	7	8	9	10	11	12	13	14	15	16	17	18	19	20	21	22	23	24	25	26	27	28	29	30
	-	-	-	-	-	-	-	-	-	-	-	-	-	-	-	-	-	-	-	-	-	-	-	-	-	-	-	-	-	-

May	Tu	W	Th	F	Sa	Su	M	Tu	W	Th	F	Sa	Su	M	Tu	W	Th	F	Sa	Su	M	Tu	W	Th	F	Sa	Su	M	Tu	W	Th
2018	1	2	3	4	5	6	7	8	9	10	11	12	13	14	15	16	17	18	19	20	21	22	23	24	25	26	27	28	29	30	31
	-	-	-	-	-	-	-	-	-	-	-	-	-	-	-	-	-	-	-	-	-	-	-	-	-	-	-	-	-	-	-

June	F	Sa	Su	M	Tu	W	Th	F	Sa	Su	M	Tu	W	Th	F	Sa	Su	M	Tu	W	Th	F	Sa	Su						
2018	1	2	3	4	5	6	7	8	9	10	11	12	13	14	15	16	17	18	19	20	21	22	23	24	25	26	27	28	29	30
	-	-	-	-	-	-	-	-	-	-	-	-	-	-	-	-	-	-	-	-	-	-	-	-	-	-	-	-	-	-

Jul	Su	M	Tu	W	Th	F	Sa	Su	M	Tu	W	Th	F	Sa	Su	M	Tu	W	Th	F	Sa	Su	M	Tu	W	Th	F	Sa	Su	M	Tu
2018	1	2	3	4	5	6	7	8	9	10	11	12	13	14	15	16	17	18	19	20	21	22	23	24	25	26	27	28	29	30	31
	-	-	-	-	-	-	-	-	-	-	-	-	-	-	-	-	-	-	-	-	-	-	-	-	-	-	-	-	-	-	-

Aug	W	Th	F	Sa	Su	M	Tu	W	Th	F	Sa	Su	M	Tu	W	Th	F	Sa	Su	M	Tu	W	Th	F	Sa	Su	M	Tu	W	Th	F
2018	1	2	3	4	5	6	7	8	9	10	11	12	13	14	15	16	17	18	19	20	21	22	23	24	25	26	27	28	29	30	31
	-	-	-	-	-	-	-	-	-	-	-	-	-	-	-	-	-	-	-	-	-	-	-	-	-	-	-	-	-	-	-

Sep	Sa	Su	M	Tu	W	Th	F	Sa	Su	M	Tu	W	Th	F	Sa	Su	M	Tu	W	Th	F	Sa	Su							
2018	1	2	3	4	5	6	7	8	9	10	11	12	13	14	15	16	17	18	19	20	21	22	23	24	25	26	27	28	29	30
	-	-	-	-	-	-	-	-	-	-	-	-	-	-	-	-	-	-	-	-	-	-	-	-	-	-	-	-	-	-

Oct	M	Tu	W	Th	F	Sa	Su	M	Tu	W	Th	F	Sa	Su	M	Tu	W	Th	F	Sa	Su	M	Tu	W	Th	F	Sa	Su	M	Tu	W
2018	1	2	3	4	5	6	7	8	9	10	11	12	13	14	15	16	17	18	19	20	21	22	23	24	25	26	27	28	29	30	31
	-	-	-	-	-	-	-	-	-	-	-	-	-	-	-	-	-	-	-	-	-	-	-	-	-	-	-	-	-	-	-

Nov	Th	F	Sa	Su	M	Tu	W	Th	F	Sa	Su	M	Tu	W	Th	F	Sa	Su	M	Tu	W	Th	F	Sa	Su	M	Tu	W	Th	F
2018	1	2	3	4	5	6	7	8	9	10	11	12	13	14	15	16	17	18	19	20	21	22	23	24	25	26	27	28	29	30
	-	-	-	-	-	-	-	-	-	-	-	-	-	-	-	-	-	-	-	-	-	-	-	-	-	-	-	-	-	-

Dec	Sa	Su	M	Tu	W	Th	F	Sa	Su	M	Tu	W	Th	F	Sa	Su	M	Tu	W	Th	F	Sa	Su	M							
2018	1	2	3	4	5	6	7	8	9	10	11	12	13	14	15	16	17	18	19	20	21	22	23	24	25	26	27	28	29	30	31
	-	-	-	-	-	-	-	-	-	-	-	-	-	-	-	-	-	-	-	-	-	-	-	-	-	-	-	-	-	-	





# Holiday lettings Seririt - Indonesia "Villa Caraka"

9

[Book now](#)

## Availability calendar - from : december 2018

Jan	Tu	W	Th	F	Sa	Su	M	Tu	W	Th	F	Sa	Su	M	Tu	W	Th	F	Sa	Su	M	Tu	W	Th							
2019	1	2	3	4	5	6	7	8	9	10	11	12	13	14	15	16	17	18	19	20	21	22	23	24	25	26	27	28	29	30	31
-	-	-	-	-	-	-	-	-	-	-	-	-	-	-	-	-	-	-	-	-	-	-	-	-	-	-	-	-	-	-	

Feb	F	Sa	Su	M	Tu	W	Th	F	Sa	Su	M	Tu	W	Th	F	Sa	Su	M	Tu	W	Th								
2019	1	2	3	4	5	6	7	8	9	10	11	12	13	14	15	16	17	18	19	20	21	22	23	24	25	26	27	28	
-	-	-	-	-	-	-	-	-	-	-	-	-	-	-	-	-	-	-	-	-	-	-	-	-	-	-	-	-	-

[Month : Next >>](#)

## Rental rates - Villa - 10 Person(s)

Rates	Night	Weekend	week	2 weeks	Month
<span style="color: green;">■</span> Low season	-	-	NZ\$1680*	-	-
<span style="color: orange;">■</span> High season	-	-	NZ\$2525*	-	-

[Book now](#)

### Booking conditions

#### • Reservation

- Payment made upon reservation : 50% of rental sum
- Payment balance : 1 month before the stay

#### • rentals

- Service charges included
- Day tax included
- Cleaning charge on departure included

### Accepted methods of payment

- Bank transfer (wire)

[▶ Book now](#)

[▶ Contact the owner](#)

Contact directly the property owners

[www.iha.co.nz](http://www.iha.co.nz)

Advert No.

22312

[>> Book now <<](#)

### Contact

Spoken languages



\* Converted at the rate indicated : €100 = \$123.46 = £88.94 = NZ\$168.87

Advert No. 22312

[www.iha.co.nz](http://www.iha.co.nz)



[>> HOLIDAY LETTINGS](#)

[BOOK DIRECT WITH THE OWNERS](#)