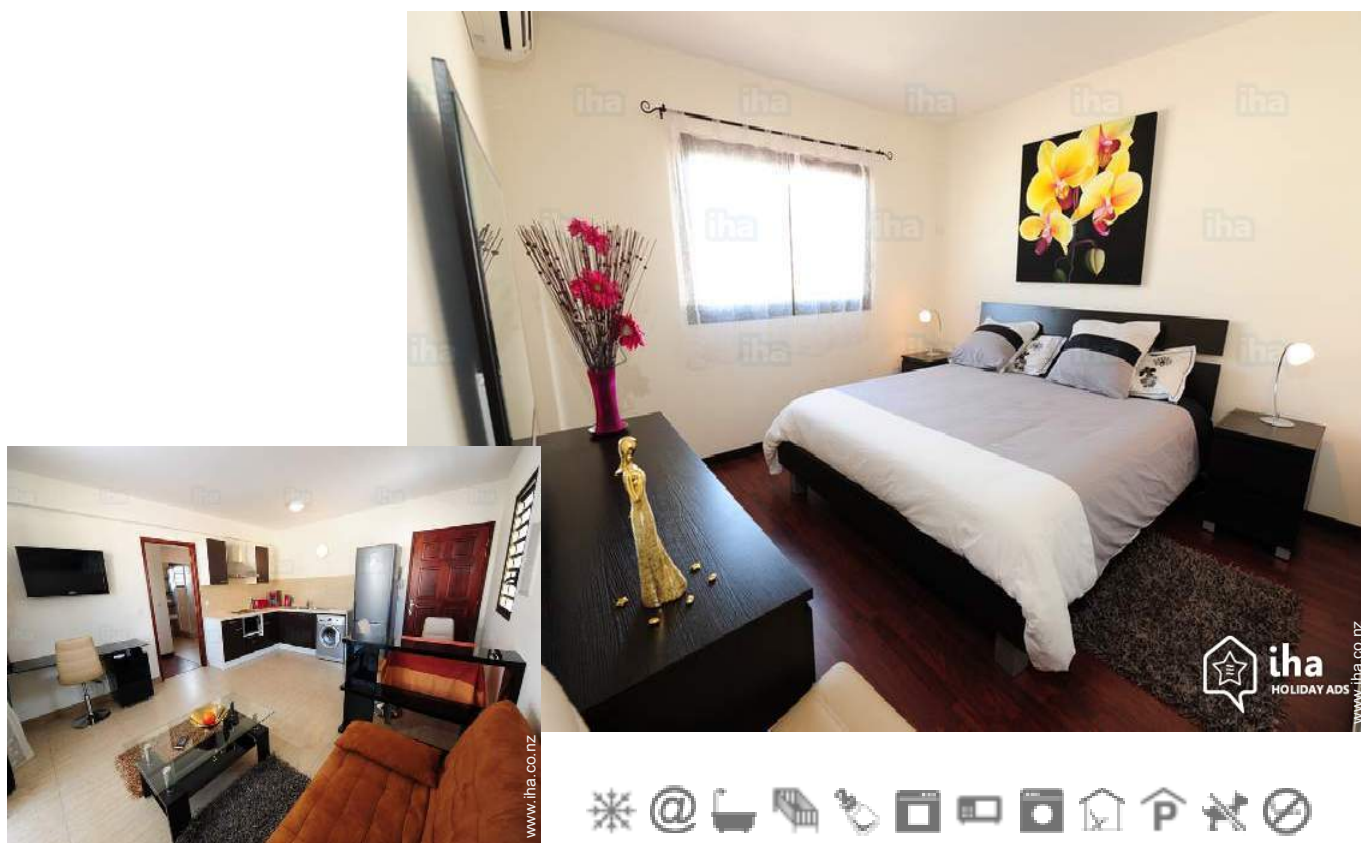


# Holiday lettings Nouméa "ENTRE CIEL ET TERRE"

In the heart of Nouméa, the Latin Quarter offers holidaymakers and business travellers the proximity of all kinds of shops. Everything is done on foot. Lines of bus 2 min. for all destinations.



**Flat-Apartments** 3rd floor, separate entrance, in a(an) Apartment block 6 floors

Setting : pleasant, conducive to shopping

Capacity : from 1 to 4 person(s)

Bedroom(s) : 1

Room(s) : 3



Eurogîtes ()  
Gîtes de France (3 ears)

Nouméa - South Province - Grande-Terre (New Caledonia)  
New Caledonia

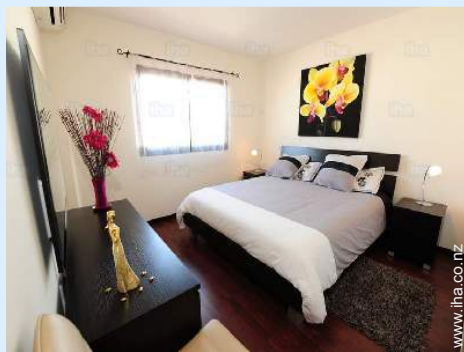
Reservation : +687 (0) 449002 (New Caledonia)

Advert No. 50035

www.iha.co.nz



### Holiday lettings



Flat-Apartments 3rd floor, separate entrance, in a(an) Apartment block 6 floors

- **Ideal for all age groups, couples**
- **View : town, street/avenue**
- **Setting : pleasant, condusive to shopping**

" The apartment itself has all the necessary equipment. Bath towels, spare sheets, etc. You are in this apartment at home. Possibility to cook. Although very central apartment is quiet, ventilated and bright. It is located in a building above the parking lots. It offers private parking and parking visitors. In the neighbourhood you will find at the bottom of the building a small grocery on the perpendicular Street a bakery and in the parallel Street, one of the best restaurants in the city. You also have a pharmacy, the street of the banks, the market, the municipal police, the post office. Can't find better location. "

### Assets

- **Parking :**  
 Covered parking : 1 communal. Parking uncovered : 1 internal.
- **baby equipment :**  
 Baby chair, baby potty

### Surroundings & location



" 5 min. by bus from the beaches. Departure from Anse-Vata on islets in front by taxi boat. Spend the day on the duck island or l ' îlot Maître. Possibility to also spend a day at the Amedee with meals and Tahitian dances to the program. "

#### Leisure

- **Leisure activities less than 20 km / 12 miles :**

Bathing, pedalo, snorkelling, jet ski, surfing, windsurfing, sailing, kite surfing, golf, tennis, squash, riding school, pony club, pathway, coastal/forest paths, hiking, rock climbing, kite flying, paragliding, boat trips, horse-drawn carriage, skate board (ramps), go-karting, ten-pin bowling, basketball, volleyball, hunting, acrobanch, fishing, pétanque pitch

- **Supervised :**

Sailing school, dive school, tennis school, riding school

- **Attractions and relaxation :**

Bar/pub, discotheque, restaurant, cinema, open air summer cinema, karaoke, park and garden, leisure park, zoo/animal park, exhibition centre, art gallery, historical site, museum, theatre, summer theatre, festivals, antiques & bric-a-brac, local craftshop, casino, racecourse, thalassotherapy centre, sauna, steam baths, health farm, beauticians, fitness centre

#### Surroundings

- **Locality :**

Heated swimming pool 1km  
 Sea/ocean 1km  
 Sandy beach 1km  
 Public swimming pool 1km  
 Public tennis court 300m  
 9 hole golf course 10km  
 Windsurfing spots 1km  
 Watersports centre 1km  
 Marina 500m  
 Slipway 800m

- **Amenities :**

Nursery 500m  
 Village centre <50m  
 Town centre 200m  
 Bus stop / bus station 100m  
 Bus pick up point beach 100m  
 Bike/mountain bike hire 1km  
 Scooter/motorbike hire 1km  
 Car rental 800m  
 Boat rental 500m  
 Scuba diving material hire 1km  
 Household linens for hire/laundry services 100m  
 Breadshop 50m  
 Caterer 50m

Local shops <50m  
 Supermarket 800m  
 High class retailers <50m  
 Hairdressing salon <50m  
 Internet cafe 200m  
 Post office 100m  
 Bank 50m  
 Cash point 50m  
 Chemist 50m  
 Doctor 100m  
 Nurse 500m  
 Hospital 30km  
 Dispensing clinic 1km



living room



living room



bathroom

### Interior

- **Receive up to :**  
from 1 to 4 person(s) (2 adults, 2 children)
- **Liveable floor area :**  
40m<sup>2</sup>
- **Interior layout :**  
3 Room(s), 1 bedroom(s), 1 bathroom, 1 WC, living room 22m<sup>2</sup>, american style kitchen, dining area, tv room, study
- **Sleeps - bed(s) :**  
1 double bed(s), 1 sofa bed(s) 2 pers, 1 baby cot(s)
- **Guest facilities :**  
Lift, T.V., DVD player, t.v points, telephone, internet access, wifi, wardrobe, cupboard, Hanging wardrobe, hair dryer, partly air conditioned, Glazed in area, Curtains, Blinds, Rolling shutters, electric shutters, entry phone system, remote controlled gates, digipad entry gates
- **Appliances :**  
Crockery/cuttlery, kitchen utensils, cafetiere, electric coffee maker, electric kettle, toaster, juicer, food processor, electric cooker, electric hobs, oven, micro-wave oven, extractor hood, refridgerator, freezer, washing machine, vacuum cleaner, iron, ironing board

### Exterior

- **Outside accommodation :**  
Covered terrace 5m<sup>2</sup>



view from the flat

### Services

- **Washing :**  
Sheets, Towels, Linen, Blanket(s), Quilt(s), Pillows
- **House :**  
Cleaning on departure supplement (+ NZ\$72\*), Parking, Airport transfers supplement (+NZ\$51\*)

### For your guidance

- **For your guidance**  
Children welcome  
No pet allowed  
Non smoking rental, mobile telephone network coverage  
Water : hot/cold  
Electricity supply : individual generator



kitchen



Photo album - 1



living room



living room



bathroom

Photo album - 2



kitchen



view from the flat



Kitchen Area



tv room



furniture




Location



Location & Access

" Aircraft often arriving late at night, it is advisable to passengers arriving to a carrier with which we work and allows us to accompany you to the receptacle. Indeed, due to the fatigue of the journey, it is inadvisable to take the car (still for 50 km to Nouméa) for half an hour drive. The canoe is a dangerous to place. "

 GPS coordinates in degrees, minutes, seconds: Latitude 22°16'32"S - Longitude 166°26'47"E ([Dwelling](#))

**Address**

→ Time : 5'

→ Rue Charles Verneilh  
Quartier Latin  
98800 Nouméa

• [Airport La Tontouta](#)

→ Nouméa, South Province, Grande-Terre  
(New Caledonia), New Caledonia  
→ Distance : 50km  
→ Time : 30'

• [Sea port Nouméa Port Moselle](#)

→ Nouméa, South Province, Grande-Terre  
(New Caledonia), New Caledonia  
→ Distance : 300m

Contact

Spoken languages



# Holiday lettings Nouméa - New Caledonia "ENTRE CIEL ET TERRE"

7  
[Book now](#)

Availability calendar - from : october 2021

Oct	F	Sa	Su	M	Tu	W	Th	F	Sa	Su	M	Tu	W	Th	F	Sa	Su	M	Tu	W	Th	F	Sa	Su	M	Tu	W	Th	F	Sa	Su
2021	1	2	3	4	5	6	7	8	9	10	11	12	13	14	15	16	17	18	19	20	21	22	23	24	25	26	27	28	29	30	31
																			-	-	-	-	-	-	-	-	-	-	-	-	-

Nov	M	Tu	W	Th	F	Sa	Su	M	Tu	W	Th	F	Sa	Su	M	Tu	W	Th	F	Sa	Su	M	Tu	W	Th	F	Sa	Su	M	Tu
2021	1	2	3	4	5	6	7	8	9	10	11	12	13	14	15	16	17	18	19	20	21	22	23	24	25	26	27	28	29	30
	-	-	-	-	-	-	-	-	-	-	-	-	-	-	-	-	-	-	-	-	-	-	-	-	-	-	-	-	-	-

Dec	W	Th	F	Sa	Su	M	Tu	W	Th	F	Sa	Su	M	Tu	W	Th	F	Sa	Su	M	Tu	W	Th	F	Sa	Su	M	Tu	W	Th	F
2021	1	2	3	4	5	6	7	8	9	10	11	12	13	14	15	16	17	18	19	20	21	22	23	24	25	26	27	28	29	30	31
	-	-	-	-	-	-	-	-	-	-	-	-	-	-	-	-	-	-	-	-	-	-	-	-	-	-	-	-	-	-	-

Jan	Sa	Su	M	Tu	W	Th	F	Sa	Su	M	Tu	W	Th	F	Sa	Su	M	Tu	W	Th	F	Sa	Su	M	Tu	W	Th	F	Sa	Su	M
2022	1	2	3	4	5	6	7	8	9	10	11	12	13	14	15	16	17	18	19	20	21	22	23	24	25	26	27	28	29	30	31
	-	-	-	-	-	-	-	-	-	-	-	-	-	-	-	-	-	-	-	-	-	-	-	-	-	-	-	-	-	-	-

Feb	Tu	W	Th	F	Sa	Su	M	Tu	W	Th	F	Sa	Su	M	Tu	W	Th	F	Sa	Su	M	Tu	W	Th	F	Sa	Su	M
2022	1	2	3	4	5	6	7	8	9	10	11	12	13	14	15	16	17	18	19	20	21	22	23	24	25	26	27	28
	-	-	-	-	-	-	-	-	-	-	-	-	-	-	-	-	-	-	-	-	-	-	-	-	-	-	-	-

Mar	Tu	W	Th	F	Sa	Su	M	Tu	W	Th	F	Sa	Su	M	Tu	W	Th	F	Sa	Su	M	Tu	W	Th	F	Sa	Su	M	Tu	W	Th
2022	1	2	3	4	5	6	7	8	9	10	11	12	13	14	15	16	17	18	19	20	21	22	23	24	25	26	27	28	29	30	31
	-	-	-	-	-	-	-	-	-	-	-	-	-	-	-	-	-	-	-	-	-	-	-	-	-	-	-	-	-	-	-

Apr	F	Sa	Su	M	Tu	W	Th	F	Sa	Su	M	Tu	W	Th	F	Sa	Su	M	Tu	W	Th	F	Sa	Su	M	Tu	W	Th	F	Sa
2022	1	2	3	4	5	6	7	8	9	10	11	12	13	14	15	16	17	18	19	20	21	22	23	24	25	26	27	28	29	30
	-	-	-	-	-	-	-	-	-	-	-	-	-	-	-	-	-	-	-	-	-	-	-	-	-	-	-	-	-	-

May	Su	M	Tu	W	Th	F	Sa	Su	M	Tu	W	Th	F	Sa	Su	M	Tu	W	Th	F	Sa	Su	M	Tu	W	Th	F	Sa	Su	M	Tu
2022	1	2	3	4	5	6	7	8	9	10	11	12	13	14	15	16	17	18	19	20	21	22	23	24	25	26	27	28	29	30	31
	-	-	-	-	-	-	-	-	-	-	-	-	-	-	-	-	-	-	-	-	-	-	-	-	-	-	-	-	-	-	

June	W	Th	F	Sa	Su	M	Tu	W	Th	F	Sa	Su	M	Tu	W	Th	F	Sa	Su	M	Tu	W	Th	F	Sa	Su	M	Tu	W	Th
2022	1	2	3	4	5	6	7	8	9	10	11	12	13	14	15	16	17	18	19	20	21	22	23	24	25	26	27	28	29	30
	-	-	-	-	-	-	-	-	-	-	-	-	-	-	-	-	-	-	-	-	-	-	-	-	-	-	-	-	-	-

Jul	F	Sa	Su	M	Tu	W	Th	F	Sa	Su	M	Tu	W	Th	F	Sa	Su	M	Tu	W	Th	F	Sa	Su	M	Tu	W	Th	F	Sa	Su
2022	1	2	3	4	5	6	7	8	9	10	11	12	13	14	15	16	17	18	19	20	21	22	23	24	25	26	27	28	29	30	31
	-	-	-	-	-	-	-	-	-	-	-	-	-	-	-	-	-	-	-	-	-	-	-	-	-	-	-	-	-	-	

# Holiday lettings South Province - Grande-Terre (New Caledonia) "ENTRE CIEL ET TERRE"

8  
[Book now](#)





## Availability calendar - from : july 2022

Aug	M	Tu	W	Th	F	Sa	Su	M	Tu	W	Th	F	Sa	Su	M	Tu	W	Th	F	Sa	Su	M	Tu	W							
2022	1	2	3	4	5	6	7	8	9	10	11	12	13	14	15	16	17	18	19	20	21	22	23	24	25	26	27	28	29	30	31
	-	-	-	-	-	-	-	-	-	-	-	-	-	-	-	-	-	-	-	-	-	-	-	-	-	-	-	-	-	-	

Sep	Th	F	Sa	Su	M	Tu	W	Th	F	Sa	Su	M	Tu	W	Th	F	Sa	Su	M	Tu	W	Th	F							
2022	1	2	3	4	5	6	7	8	9	10	11	12	13	14	15	16	17	18	19	20	21	22	23	24	25	26	27	28	29	30
	-	-	-	-	-	-	-	-	-	-	-	-	-	-	-	-	-	-	-	-	-	-	-	-	-	-	-	-	-	

[Month : Next >>](#)

## Rental rates - Flat-Apartments - from 1 to 4 Person(s)

Rates	Night	Weekend	week	2 weeks	Month
 Low season	-	-	NZ\$604* (Monday)	-	-
 Mid season	-	-	NZ\$721* (Monday)	-	-
 High season	-	-	NZ\$721* (Monday)	-	-
 Promotional period	-	-	NZ\$604* (Monday)	-	-

(Check-in day)

[Book now](#)

### Booking conditions

#### • Reservation

→ Payment made upon reservation :  
30% of rental sum  
→ Payment balance :  
on handing over the keys

#### • rentals

→ Service charges included  
→ Cleaning charge levy on departure :  
NZ\$72\*

[▶ Book now](#)

[▶ Contact the owner](#)

### Accepted methods of payment

• Visa/Delta/Electron • Bank transfer  
(wire) • Cash

Contact directly the property owners

[www.iha.co.nz](http://www.iha.co.nz)  
Advert No.  
50035  
[>> Book now <<](#)

### Contact

Spoken  
languages



\* Converted at the rate indicated : €100 = \$110 = £91 = NZ\$171.66

Advert No. 50035

[www.iha.co.nz](http://www.iha.co.nz)



[>> HOLIDAY LETTINGS](#)

[BOOK DIRECT WITH THE OWNERS](#)