

# Holiday lettings Colmar "La Maison Bleue"

Gîte ground floor located at the edge of the river Lauch in the tourist district and picturesque little Venice.



**Flat-Apartments** ground floor, separate entrance, in a(an) Charming Tudor style house single storey

Setting : historical, romantic

Capacity : from 1 to 4 person(s)

Bedroom(s) : 1

Room(s) : 3

Colmar - Upper Rhine (68) - Alsace

France

Reservation : +33 (0) 389234403 (France)

Advert No. 71638

www.ihaco.nz



## Holiday lettings



Flat-Apartments ground floor, separate entrance, in a(an) Charming Tudor style house single storey

- **Ideal for retired people, couples with baby**
- View : courtyard, river, square
- Setting : historical, romantic
- Exposure : South-east

" Comfortable apartment with private garden of 60 m2 overlooking the river where you can dine and relax watching the boats. "

## Assets

- **baby equipment :**  
Baby chair, baby bath, baby potty



river

## Surroundings & location



City



Festival



Culture

" Colmar and Alsace in general are full of picturesque places and museums to visit. You can also enjoy hiking in the Vosges located at about 20 km from Colmar. "

### Leisure

- **Leisure activities less than 20 km / 12 miles :**

Bathing, golf, tennis, riding school, pathway, coastal/forest paths, boat trips, horse-drawn carriage

- **Attractions and relaxation :**

Bar/pub, restaurant, cinema, park and garden, exhibition centre, art gallery, historical site, museum, theatre, festivals, antiques & bric-a-brac, local craftshop, cellar and wine tasting

### Surroundings

- **Locality :**

Ski slopes 30km  
Ski lifts 30km  
Ice skating rink 2km  
Heated swimming pool 2km  
Public swimming pool 2km  
Public tennis court 2km  
18 hole golf course 15km  
River <50m  
Stretch of water 5km  
Lake 25km  
Forest 15km  
Mountain range 20km

- **Amenities :**

Town centre <50m  
Bus stop / bus station 50m  
Bike/mountain bike hire 1km  
Car rental 2km  
Breadshop <50m  
Caterer <50m  
Local shops <50m  
Supermarket 2km  
Post office 800m  
Cash point 200m  
Chemist 300m  
Doctor 200m  
Nurse 300m  
Hospital 2km



tv room



tv room



tv room

## Interior

- **Receive up to :**

from 1 to 4 person(s) (3 adults, 1 children)

- **Liveable floor area :**

60m<sup>2</sup>

- **Interior layout :**

3 Room(s), 1 bedroom(s), 1 bathroom, 1 WC, separate kitchen, tv room, reading room, patio

- **Sleeps - bed(s) :**

1 super king-size bed(s), 1 folding bed(s) 1 pers, 1 sofa bed(s) 1 pers

- **Guest facilities :**

T.V., hi-fi system, DVD player, board games, book collection, film collection, internet access, wifi, wardrobe, Hanging wardrobe, hair dryer, electric heating, Double glazed, Rolling shutters, entry phone system, fire alarm

- **Appliances :**

Crockery/cutlery, kitchen utensils, electric coffee maker, electric kettle, toaster, juicer, food processor, electric cooker, electric hobs, oven, micro-wave oven, extractor hood, refrigerator, freezer, dish washer, washing machine, vacuum cleaner, iron, ironing board

## Exterior

- **Outside setting :**

Private courtyard 40m<sup>2</sup>, garden 20m<sup>2</sup>, river

- **Outside amenities :**

Garden table(s), 4 garden seat(s), parasol, 2 chaise(s) longue(s)



sofa bed(s) 1 pers

## Services

- **Washing :**

Sheets, Towels, Linen, Blanket(s), Quilt(s), Pillows

- **House :**

Cleaning on departure supplement (+ NZ\$69\*)

## For your guidance

- **For your guidance**

Children welcome  
Non smoking rental, mobile telephone network coverage  
Water : hot/cold  
Electricity supply : mains

- **Handicapped people welcome**

Wheelchair access



view from the sitting-room



Photo album - 1



river



tv room



tv room



tv room



view from the sitting-room



Photo album - 2



sofa bed(s) 1 pers



separate kitchen



large bedroom



master bedroom



bathroom



bathroom



view from the sitting-room



façade



view from the garden/park



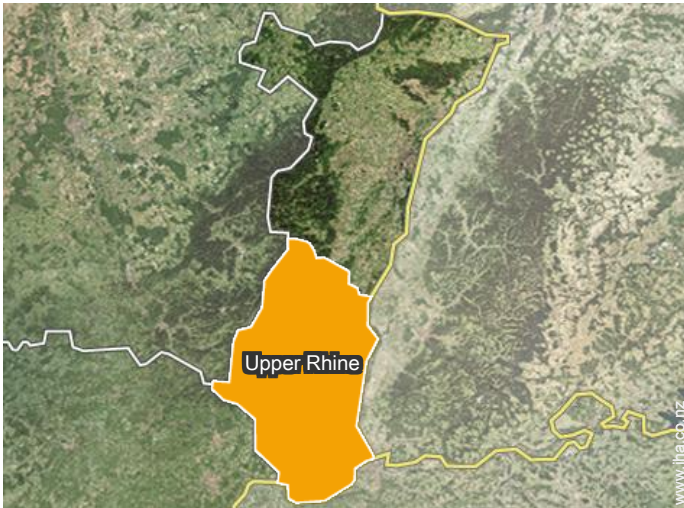
façade



Winter



### Location



### Location & Access

" Lodging located in the centre of the old town. You can park your vehicle within 100 meters free. "



GPS coordinates in degrees, minutes, seconds: Latitude 48°4'26"N - Longitude 7° 21'25"E (Dwelling)

#### Address

→ 2 Place des Six Montagnes Noires  
68000 Colmar

#### • Train station Colmar

→ Colmar, Upper Rhine, Alsace, France  
→ Distance : 2km  
→ Time : 15'

#### • Motorway (junction) A35

→ Colmar, Upper Rhine, Alsace, France  
→ Distance : 3km  
→ Time : 15'

#### • Airport Basel/Mulhouse/Freiburg

→ Mulhouse, Upper Rhine, Alsace, France  
→ Distance : 65km

→ Time : 45'

- Mulhouse : (40km)
- Strasbourg : (70km)

### Contact

Spoken languages



# Holiday lettings Colmar - France "La Maison Bleue"

7  
[Book now](#)

Availability calendar - from : january 2019

Jan	Tu	W	Th	F	Sa	Su	M	Tu	W	Th	F	Sa	Su	M	Tu	W	Th	F	Sa	Su	M	Tu	W	Th							
2019	1	2	3	4	5	6	7	8	9	10	11	12	13	14	15	16	17	18	19	20	21	22	23	24	25	26	27	28	29	30	31

Feb	F	Sa	Su	M	Tu	W	Th	F	Sa	Su	M	Tu	W	Th	F	Sa	Su	M	Tu	W	Th									
2019	1	2	3	4	5	6	7	8	9	10	11	12	13	14	15	16	17	18	19	20	21	22	23	24	25	26	27	28		

Mar	F	Sa	Su	M	Tu	W	Th	F	Sa	Su	M	Tu	W	Th	F	Sa	Su	M	Tu	W	Th	F	Sa	Su							
2019	1	2	3	4	5	6	7	8	9	10	11	12	13	14	15	16	17	18	19	20	21	22	23	24	25	26	27	28	29	30	31

Apr	M	Tu	W	Th	F	Sa	Su	M	Tu	W	Th	F	Sa	Su	M	Tu	W	Th	F	Sa	Su	M	Tu	W	Th	F	Sa	Su	M	Tu	
2019	1	2	3	4	5	6	7	8	9	10	11	12	13	14	15	16	17	18	19	20	21	22	23	24	25	26	27	28	29	30	

May	W	Th	F	Sa	Su	M	Tu	W	Th	F	Sa	Su	M	Tu	W	Th	F	Sa	Su	M	Tu	W	Th	F	Sa	Su	M	Tu	W	Th	F	
2019	1	2	3	4	5	6	7	8	9	10	11	12	13	14	15	16	17	18	19	20	21	22	23	24	25	26	27	28	29	30	31	

June	Sa	Su	M	Tu	W	Th	F	Sa	Su	M	Tu	W	Th	F	Sa	Su	M	Tu	W	Th	F	Sa	Su								
2019	1	2	3	4	5	6	7	8	9	10	11	12	13	14	15	16	17	18	19	20	21	22	23	24	25	26	27	28	29	30	

Jul	M	Tu	W	Th	F	Sa	Su	M	Tu	W	Th	F	Sa	Su	M	Tu	W	Th	F	Sa	Su	M	Tu	W	Th	F	Sa	Su	M	Tu	W	
2019	1	2	3	4	5	6	7	8	9	10	11	12	13	14	15	16	17	18	19	20	21	22	23	24	25	26	27	28	29	30	31	

Aug	Th	F	Sa	Su	M	Tu	W	Th	F	Sa	Su	M	Tu	W	Th	F	Sa	Su	M	Tu	W	Th	F	Sa	Su	M	Tu	W	Th	F	Sa	
2019	1	2	3	4	5	6	7	8	9	10	11	12	13	14	15	16	17	18	19	20	21	22	23	24	25	26	27	28	29	30	31	

Sep	Su	M	Tu	W	Th	F	Sa	Su	M	Tu	W	Th	F	Sa	Su	M	Tu	W	Th	F	Sa	Su	M								
2019	1	2	3	4	5	6	7	8	9	10	11	12	13	14	15	16	17	18	19	20	21	22	23	24	25	26	27	28	29	30	

Oct	Tu	W	Th	F	Sa	Su	M	Tu	W	Th	F	Sa	Su	M	Tu	W	Th	F	Sa	Su	M	Tu	W	Th							
2019	1	2	3	4	5	6	7	8	9	10	11	12	13	14	15	16	17	18	19	20	21	22	23	24	25	26	27	28	29	30	31

Reserved
  Low season
  Mid season
  High season

# Holiday lettings Upper Rhine - Alsace "La Maison Bleue"

8  
[Book now](#)

## Availability calendar - from : october 2019

Nov	F	Sa	Su	M	Tu	W	Th	F	Sa	Su	M	Tu	W	Th	F	Sa	Su	M	Tu	W	Th	F	Sa							
2019	1	2	3	4	5	6	7	8	9	10	11	12	13	14	15	16	17	18	19	20	21	22	23	24	25	26	27	28	29	30
	-	-	-	-	-	-	-	-	-	-	-	-	-	-	-	-	-	-	-	-	-	-	-	-	-	-	-	-	-	

Dec	Su	M	Tu	W	Th	F	Sa	Su	M	Tu	W	Th	F	Sa	Su	M	Tu	W	Th	F	Sa	Su	M	Tu							
2019	1	2	3	4	5	6	7	8	9	10	11	12	13	14	15	16	17	18	19	20	21	22	23	24	25	26	27	28	29	30	31
	-	-	-	-	-	-	-	-	-	-	-	-	-	-	-	-	-	-	-	-	-	-	-	-	-	-	-	-	-	-	

Reserved
  Low season
  Mid season
  High season

[Month : Next >>](#)

## Rental rates - Flat-Apartments - from 1 to 4 Person(s)

Rates	Night	Weekend	week	2 weeks	Month
<span style="color: green;">■</span> Low season	-	-	NZ\$661*	-	-
<span style="color: blue;">■</span> Mid season	-	-	NZ\$769* (Saturday)	-	-
<span style="color: orange;">■</span> High season	-	-	NZ\$925* (Saturday)	-	-

(Check-in day)

[Book now](#)

### Booking conditions

#### • Reservation

- Payment made upon reservation : 25% of rental sum
- Payment balance : on handing over the keys
- Deposit required

#### • rentals

- Service charges included
- Day tax in addition
- Cleaning charge levy on departure : NZ\$86\*
- Anticipated supplement for :
  - baby
  - supplementary bed(s)

### Accepted methods of payment

- Cheque • PayPal • Cash

[▶ Book now](#)

[▶ Contact the owner](#)

Contact directly the property owners

[www.iha.co.nz](http://www.iha.co.nz)

Advert No.

71638

[>> Book now <<](#)

### Contact

Spoken languages



\* Converted at the rate indicated : €100 = \$116.85 = £89 = NZ\$171.66

Advert No. 71638

[www.iha.co.nz](http://www.iha.co.nz)

