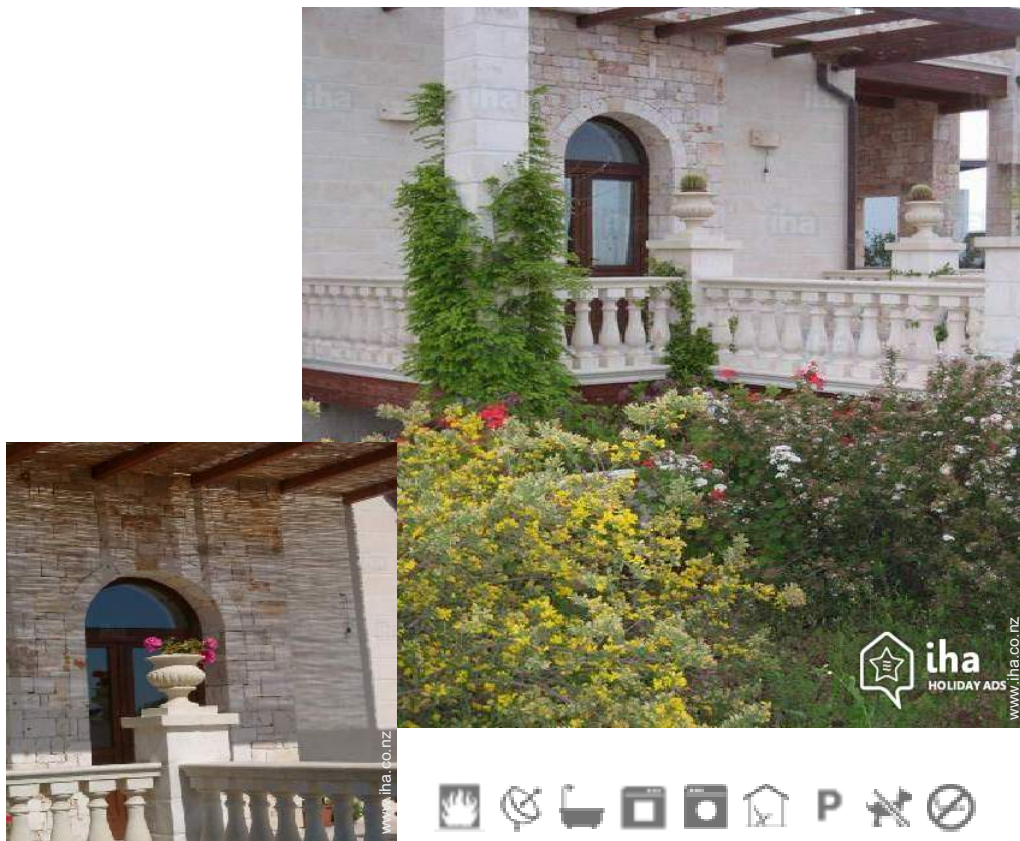


# Holiday lettings Capitolo "Villa Pugliese"

Relax among olive trees and sea breezes at 900 metres from the beaches of the resort CHAPTER South of Monopoli assignee of the blue flag in 2014.



**Stone-Built Residence**, detached, 1 floor, separate entrance, in a(an) Private property

Setting : pleasant, rural

Capacity : from 2 to 10 person(s)

Bedroom(s) : 3

Capitolo - Province of Bari (BA) - Apulia

Italy

Advert No. 7054

[www.iha.co.nz](http://www.iha.co.nz)



>> HOLIDAY LETTINGS

BOOK DIRECT WITH THE OWNERS



## Holiday lettings



Stone-Built Residence, detached, 1 floor, separate entrance, in a(an) Private property

- **Ideal for family, couples**

- **View :** sea/ocean, country side, garden/park, farmland, nightlights

- **Setting :** pleasant, rural

- **Exposure :** South-east

" Apulian-style vacation Villa with vaults in masonry is a newly built and located in the small residence borgo maestro of " axe among olive trees, the scope and sea breeze. Very quiet location with parking just 900 meters from the sea. Finely furnished in style, with the intention of offering guests a refined and comfortable space. The villa is equipped with 2 drive: il glicine Unit with 4 beds and one bedroom on the ground floor of the villa: Rosemary unit with 6 beds and 2 bedrooms located in the basement with a large garden terrace and convivial spaces. The units are equipped with everything you need for a relaxing stay and intercommunicate with internal stair to accommodate a group of 10 people. We do not accept animals. "

## Assets

- **Parking :**

Parking uncovered : 1 reserved bay.



## Surroundings & location



Seaside



Golf



Fishing



Culture

" Distances from places of interest. The location is wonderful for Centre of gravity compared to the major places of interest in Puglia: EGNATHIA GOLF CLUB 3 km; Zoo safari-Fasano 5 km; Polignano a mare, 10 km; Castellana Grotte 15 miles; Alberobello 20 Km; Ostuni 25 km; Bari 40 km; Matera 50 km; Lecce 100 miles; Trani 100 miles; Bari Palese airport 55 km; Brindisi airport 60 km "

### Leisure

- **Leisure activities less than 20 km / 12 miles :**

Bathing, pedalo, snorkelling, surfing, windsurfing, sailing, golf, tennis, riding school, boat trips, horse trekking, mini-golf, go-karting, RC modelling track, ten-pin bowling, safari, safari photography

- **Supervised :**

Riding school

- **Attractions and relaxation :**

Bar/pub, discotheque, restaurant, cinema, open air summer cinema, leisure park, zoo/ animal park, nature reserve, historical site, festivals, local craftshop, cellar and wine tasting, thermal baths

### Surroundings

- **Locality :**

Ice skating rink 7,5km  
Sea/ocean 800m  
Sandy beach 800m  
Rocky beach 1km  
Creek 1,5km  
Public swimming pool 3km  
Public tennis court 5km  
18 hole golf course 3km  
Windsurfing spots 2,5km  
Surfing spots 1km  
Watersports centre 15km

- **Amenities :**

Town centre 5km  
Bus stop / bus station 200m  
Bike/mountain bike hire <50m  
Household linens for hire/laundry services <50m  
Breadshop 2km  
Local shops 5km  
Supermarket 3km  
High class retailers 5km  
Hairdressing salon 5km  
Post office 5km  
Bank 5km  
Doctor 5km  
Hospital 5km



kitchen



Stone-Built Residence



view from the bedroom

### Interior

- **Receive up to :**  
from 2 to 10 person(s)
- **Liveable floor area :**  
200m<sup>2</sup>
- **Interior layout :**  
3 bedroom(s), 1 bathroom, 1 shower room, living room 30m<sup>2</sup>, separate kitchen, dining room, veranda, loggia
- **Sleeps - bed(s) :**  
1 double bed(s), 1 sofa bed(s) 2 pers
- **Guest facilities :**  
Fireplace, T.V., DVD player, t.v points, cable/satelite, wardrobe, Hanging wardrobe, hair dryer, central heating, Blinds, Double glazed, burgular alarm, remote controlled gates
- **Appliances :**  
Crockery/cuttlery, kitchen utensils, cafetiere, gas cooker, oven, extractor hood, refridgerator, freezer, washing machine, iron, ironing board

### Exterior

- **Ground surface :**  
2000m<sup>2</sup>
- **Outside accommodation :**  
Covered terrace 55m<sup>2</sup>, roof terrace 60m<sup>2</sup>, balcony 35m<sup>2</sup>, sundeck 60m<sup>2</sup>
- **Outside setting :**  
Private courtyard, garden 100m<sup>2</sup>, landscaped garden > 1000m<sup>2</sup>, olive grove 100m<sup>2</sup>
- **Outside amenities :**  
Garden table(s), 4 garden seat(s)



interior

### Services

- **Washing :**  
Sheets supplement (1 X / per week + NZ\$39\*), Towels supplement (1 X / per week + NZ\$8\*), Blanket(s), Pillows
- **House :**  
Cleaning on departure, Parking
- **Personnel :**  
Laundry supplement (1 X / per week + NZ\$47\*), Guide supplement

### For your guidance

- **For your guidance**  
Children welcome  
No pet allowed  
No smoking rental, mobile telephone network coverage, personal transport advisable  
Water : hot/cold  
Local voltage supply : 220-240V / 50Hz



the house



Photo album - 1



Stone-Built Residence



kitchen



view from the bedroom



the house

Photo album - 2



interior



bathroom



bathroom



view from the garden/park



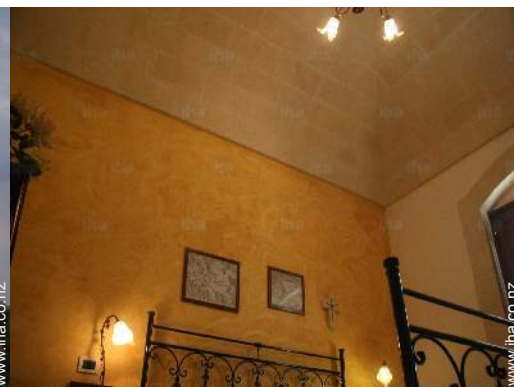
General



view from the house



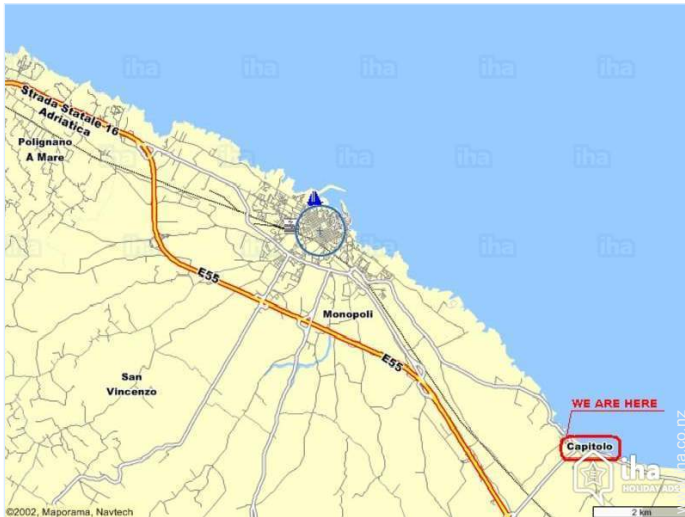
General



bedroom



## Route map



## Location & Access

" The location in the countryside of monopolies among olive groves in a quiet and pleasant but only 900 metres from sandy beaches and rocky with a beautiful blue sea! "



GPS coordinates in degrees, minutes, seconds: Latitude 40° 53'25"N - Longitude 17°21'36"E (Dwelling)

### Address

→ C. da Capitolo  
70043 Capitolo

### • Airport Bari Palese

→ Bari, Province of Bari, Apulia, Italy  
→ Distance : 70km  
→ Time : 50'

- Alberobello : (25km)
- Castellana Grotte : (25km)
- Bari : (50km)

## Contact

Spoken languages



Location



# Holiday lettings Province of Bari - Apulia "Villa Pugliese"

[Book now](#)

## Availability calendar - from : october 2017

Oct	Su	M	Tu	W	Th	F	Sa	Su	M	Tu	W	Th	F	Sa	Su	M	Tu	W	Th	F	Sa	Su	M	Tu							
2017	1	2	3	4	5	6	7	8	9	10	11	12	13	14	15	16	17	18	19	20	21	22	23	24	25	26	27	28	29	30	31

Nov	W	Th	F	Sa	Su	M	Tu	W	Th	F	Sa	Su	M	Tu	W	Th	F	Sa	Su	M	Tu	W	Th							
2017	1	2	3	4	5	6	7	8	9	10	11	12	13	14	15	16	17	18	19	20	21	22	23	24	25	26	27	28	29	30

Dec	F	Sa	Su	M	Tu	W	Th	F	Sa	Su	M	Tu	W	Th	F	Sa	Su	M	Tu	W	Th	F	Sa	Su							
2017	1	2	3	4	5	6	7	8	9	10	11	12	13	14	15	16	17	18	19	20	21	22	23	24	25	26	27	28	29	30	31

Jan	M	Tu	W	Th	F	Sa	Su	M	Tu	W	Th	F	Sa	Su	M	Tu	W	Th	F	Sa	Su	M	Tu	W							
2018	1	2	3	4	5	6	7	8	9	10	11	12	13	14	15	16	17	18	19	20	21	22	23	24	25	26	27	28	29	30	31

Feb	Th	F	Sa	Su	M	Tu	W	Th	F	Sa	Su	M	Tu	W	Th	F	Sa	Su	M	Tu	W							
2018	1	2	3	4	5	6	7	8	9	10	11	12	13	14	15	16	17	18	19	20	21	22	23	24	25	26	27	28

Mar	Th	F	Sa	Su	M	Tu	W	Th	F	Sa	Su	M	Tu	W	Th	F	Sa	Su	M	Tu	W	Th	F	Sa							
2018	1	2	3	4	5	6	7	8	9	10	11	12	13	14	15	16	17	18	19	20	21	22	23	24	25	26	27	28	29	30	31

Apr	Su	M	Tu	W	Th	F	Sa	Su	M	Tu	W	Th	F	Sa	Su	M	Tu	W	Th	F	Sa	Su	M							
2018	1	2	3	4	5	6	7	8	9	10	11	12	13	14	15	16	17	18	19	20	21	22	23	24	25	26	27	28	29	30

May	Tu	W	Th	F	Sa	Su	M	Tu	W	Th	F	Sa	Su	M	Tu	W	Th	F	Sa	Su	M	Tu	W	Th							
2018	1	2	3	4	5	6	7	8	9	10	11	12	13	14	15	16	17	18	19	20	21	22	23	24	25	26	27	28	29	30	31

June	F	Sa	Su	M	Tu	W	Th	F	Sa	Su	M	Tu	W	Th	F	Sa	Su	M	Tu	W	Th	F	Sa							
2018	1	2	3	4	5	6	7	8	9	10	11	12	13	14	15	16	17	18	19	20	21	22	23	24	25	26	27	28	29	30

Jul	Su	M	Tu	W	Th	F	Sa	Su	M	Tu	W	Th	F	Sa	Su	M	Tu	W	Th	F	Sa	Su	M	Tu							
2018	1	2	3	4	5	6	7	8	9	10	11	12	13	14	15	16	17	18	19	20	21	22	23	24	25	26	27	28	29	30	31

Low season





Availability calendar - from : july 2018





Aug	W	Th	F	Sa	Su	M	Tu	W	Th	F	Sa	Su	M	Tu	W	Th	F	Sa	Su	M	Tu	W	Th	F							
2018	1	2	3	4	5	6	7	8	9	10	11	12	13	14	15	16	17	18	19	20	21	22	23	24	25	26	27	28	29	30	31

Sep	Sa	Su	M	Tu	W	Th	F	Sa	Su	M	Tu	W	Th	F	Sa	Su	M	Tu	W	Th	F	Sa	Su							
2018	1	2	3	4	5	6	7	8	9	10	11	12	13	14	15	16	17	18	19	20	21	22	23	24	25	26	27	28	29	30

 Low season

[Month : Next >>](#)

Rental rates - Stone-Built Residence - from 2 to 10 Person(s)

Rates	Night	Weekend	week	2 weeks	Month
 Low season	-	-	NZ\$628*	NZ\$1177*	NZ\$1883*
 Mid season	NZ\$228* > 2	-	NZ\$942*	NZ\$1648* (Saturday)	NZ\$3139*
 High season	NZ\$275* > 2	-	NZ\$1334* (Saturday)	-	-
 Promotional period	-	-	NZ\$471*	NZ\$942*	NZ\$1099*

(Check-in day) > Minimum Night

[Book now](#)

Booking conditions

• Reservation

→ Payment made upon reservation :  
50% of rental sum  
→ Payment balance :  
3 days before the stay

• rentals

→ Service charges to be added  
→ Day tax in addition  
→ Cleaning charge levy on departure :  
NZ\$71\*

[▶ Book now](#)

[▶ Contact the owner](#)

Accepted methods of payment

• International Money Order • Bank transfer (wire) • Solo • PayPal • Cash

Contact directly the property owners

[www.iha.co.nz](http://www.iha.co.nz)

Advert No.

7054

[>> Book now <<](#)

Contact

Spoken languages



\* Converted at the rate indicated : €100 = \$117.29 = £89.59 = NZ\$156.95

Advert No. 7054

[www.iha.co.nz](http://www.iha.co.nz)

