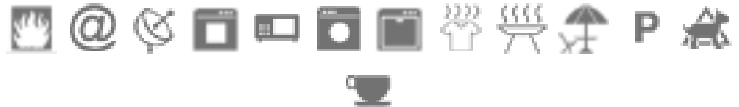
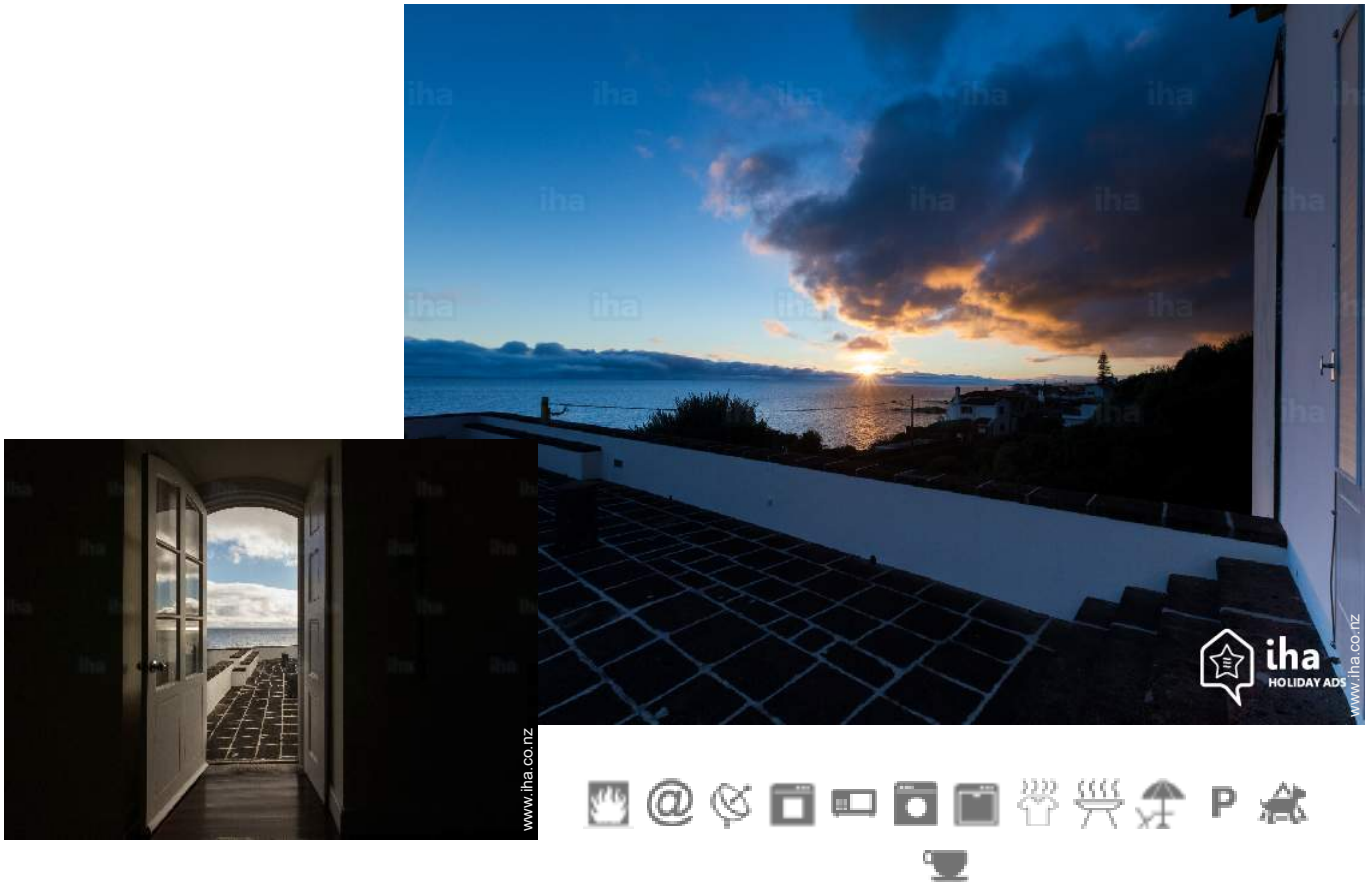


# Gîte - Self Catering Atalhada "Casa da Rocha Quebrada"

Located over the sea; view to the sea and mountain. Beautiful classified house, with gorgeous balconies. Surrounded by a green yard with big old trees.



Gîte - Self Catering - Country House, detached, 1 floor, separate entrance, in a(an) Private property

Setting : seaside, tranquil

Capacity : from 1 to 6 person(s)

Bedroom(s) : 3

Room(s) : 8

Atalhada - São Miguel Island - Eastern Group

Azores

Advert No. 70803

[www.ihaco.nz](http://www.ihaco.nz)



>> HOLIDAY LETTINGS

BOOK DIRECT WITH THE OWNERS

## Gîte - Self Catering



Gîte - Self Catering - Country House, detached, 1 floor, separate entrance, in a(an) Private property

- **Ideal for family, group**
- **View :** panoramic, unobscured, not overlooked, sea/ocean, fantastic sunset
- **Setting :** seaside, tranquil
- **Exposure :** South

" In Atalhada Lagoa, just 5 kms east of Ponta Delgada, it is an 18th century manor house, overlooking the sea, which is considered regional heritage due to its wonderful and rich architecture and pristine conservation condition. The house has the ground floor and 1st floor. The 1st floor is fully suited to receive guests who want to stay in just one floor. There you will find all the needed rooms and facilities, namely 3 bedrooms with private bathrooms, dining room, living room, snooker room, den, kitchen, amazing balconies with gorgeous sea and mountain views and a Chapel. "

## Assets

- **Parking :**  
Parking uncovered : internal.



## Surroundings & location



### Seaside

" The house is located about 2.5 km from Pópulo beaches and 2 km from Lagoa sea swimming-pools, and just a few minutes, walking distances, to a natural sea swimming area. "

### Leisure

- **Leisure activities less than 20 km / 12 miles :**

Bathing, snorkelling, scuba diving, scuba diving (Standard diving dress), banana boat, water skiing, jet ski, surfing, windsurfing, sailing, kite surfing, golf, tennis, riding school, pathway, coastal/forest paths, hiking, climbing, paragliding, boat trips, horse-drawn carriage, horse trekking, mini-golf, ten-pin bowling, basketball, safari, fishing, deep-sea angling, angling, spear fishing

- **Attractions and relaxation :**

Bar/pub, restaurant, park and garden, leisure park, health farm

### Surroundings

- **Locality :**

Sea/ocean <50m  
Sandy beach 2km  
Public swimming pool 3km  
18 hole golf course 7,5km  
Watersports centre 10km  
Marina 2,5km

- **Amenities :**

Village centre 1km  
Town centre 10km  
Bus stop / bus station <50m  
Local shops 2,5km  
Supermarket 1km  
Post office 2,5km  
Bank 2,5km  
Cash point 2,5km  
Chemist 2,5km  
Doctor 2,5km  
Hospital 10km  
Dispensing clinic 2,5km





## Exterior

- **Ground surface :**  
5000m<sup>2</sup>
- **Outside accommodation :**  
Terrace 50m<sup>2</sup>, sundeck
- **Outside setting :**  
Private courtyard, enclosed grounds 200m<sup>2</sup>, lawn 300m<sup>2</sup>, wooded park 1 ha
- **Outside amenities :**  
BBQ, garden table(s), 10 garden seat(s), parasol, chaise(s) longue(s)



## Interior

- **Receive up to :**  
from 1 to 6 person(s)
- **Liveable floor area :**  
300m<sup>2</sup>
- **Interior layout :**  
8 Room(s), 3 bedroom(s), 3 bathroom, 3 shower room, 2 WC, living room 35m<sup>2</sup>, typical style kitchen, dining room, cosy nook, games room, dressing room, study, patio, veranda, loggia
- **Sleeps - bed(s) :**  
1 double bed(s), 1 super king-size bed(s), 1 single bed(s), 2 twin beds (standard), 2 possible extra bed(s)
- **Guest facilities :**  
Fireplace, T.V., videoplayer, DVD player, cable/satelite, internet access, high speed internet access, wifi, wardrobe, Curtains, Rolling shutters
- **Appliances :**  
Crockery/cuttlery, kitchen utensils, cafetiere, electric coffee maker, electric kettle, toaster, electric hobs, oven, micro-wave oven, extractor hood, refridgerator, freezer, dish washer, washing machine, clothes dryer, vacuum cleaner, iron, ironing board

## Services

- **Washing :**  
Sheets (1 X / per week), Towels (1 X / per week)
- **House :**  
Cleaning (1 X / per week), Parking
- **Restauration :**  
Breakfast supplement

## For your guidance

- **For your guidance**  
Children welcome  
Pets accepted under certain conditions (ask the owner)  
Present on site : pets, equine animals, farm animals  
Mobile telephone network coverage, personal transport advisable  
Water : hot/cold  
Local voltage supply : 220-240V / 50Hz





Photo album - 1



Photo album - 2

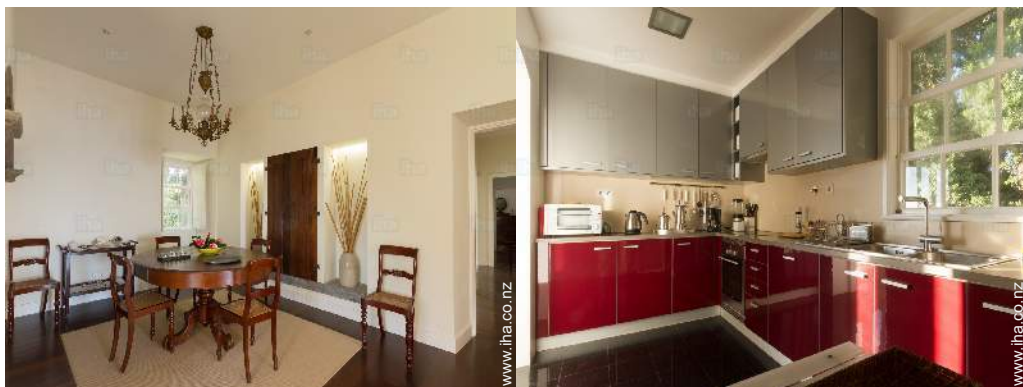
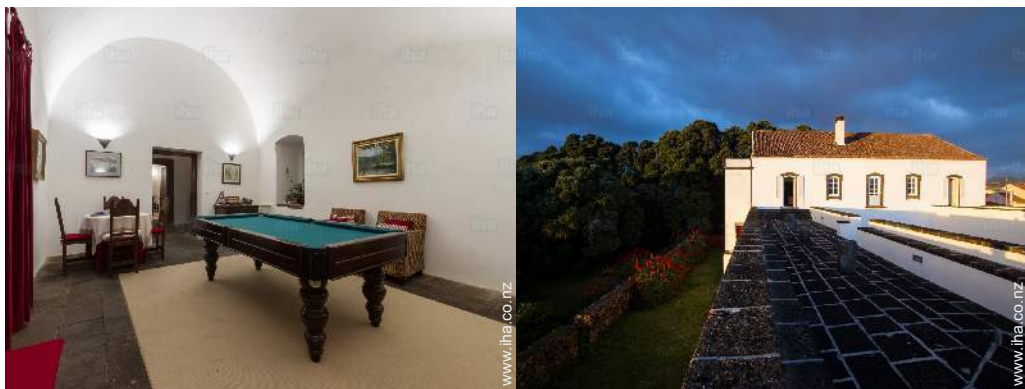




Photo album - 3



## Location



## Location & Access

" Located at 5 kms from Ponta Delgada, close to the beaches, in Atalhada-Lagoa, it is a 18th Manoir which enjoys a privileged view over the sea. "



GPS coordinates in degrees, minutes, seconds: Latitude 37°44'46"N - Longitude 25°35'46"W ([Dwelling](#))

### Address

→ Rua Nossa Senhora da Apresentação N  
2  
9560 Atalhada

### • Airport João Paulo II

→ Ponta Delgada, São Miguel Island,  
Eastern Group, Azores  
→ Distance : 15km  
→ Time : 15'

- Capelas : (18km)
- Ponta Delgada : (12km)
- Ribeira Grande : (14km)

## Contact

Spoken  
languages



Gîte - Self Catering  
 São Miguel Island - Eastern Group  
**"Casa da Rocha Quebrada"**

Availability calendar - from : january 2019

Jan	Tu	W	Th	F	Sa	Su	M	Tu	W	Th	F	Sa	Su	M	Tu	W	Th	F	Sa	Su	M	Tu	W	Th	F	Sa	Su	M	Tu	W	Th
2019	1	2	3	4	5	6	7	8	9	10	11	12	13	14	15	16	17	18	19	20	21	22	23	24	25	26	27	28	29	30	31
																	-	-	-	-	-	-	-	-	-	-	-	-	-	-	-

Feb	F	Sa	Su	M	Tu	W	Th	F	Sa	Su	M	Tu	W	Th	F	Sa	Su	M	Tu	W	Th	F	Sa	Su	M	Tu	W	Th	
2019	1	2	3	4	5	6	7	8	9	10	11	12	13	14	15	16	17	18	19	20	21	22	23	24	25	26	27	28	
	-	-	-	-	-	-	-	-	-	-	-	-	-	-	-	-	-	-	-	-	-	-	-	-	-	-	-	-	-

Mar	F	Sa	Su	M	Tu	W	Th	F	Sa	Su	M	Tu	W	Th	F	Sa	Su	M	Tu	W	Th	F	Sa	Su	M	Tu	W	Th	F	Sa	Su
2019	1	2	3	4	5	6	7	8	9	10	11	12	13	14	15	16	17	18	19	20	21	22	23	24	25	26	27	28	29	30	31
	-	-	-	-	-	-	-	-	-	-	-	-	-	-	-	-	-	-	-	-	-	-	-	-	-	-	-	-	-	-	-

Apr	M	Tu	W	Th	F	Sa	Su	M	Tu	W	Th	F	Sa	Su	M	Tu	W	Th	F	Sa	Su	M	Tu	W	Th	F	Sa	Su	M	Tu
2019	1	2	3	4	5	6	7	8	9	10	11	12	13	14	15	16	17	18	19	20	21	22	23	24	25	26	27	28	29	30
	-	-	-	-	-	-	-	-	-	-	-	-	-	-	-	-	-	-	-	-	-	-	-	-	-	-	-	-	-	-

May	W	Th	F	Sa	Su	M	Tu	W	Th	F	Sa	Su	M	Tu	W	Th	F	Sa	Su	M	Tu	W	Th	F	Sa	Su	M	Tu	W	Th	F
2019	1	2	3	4	5	6	7	8	9	10	11	12	13	14	15	16	17	18	19	20	21	22	23	24	25	26	27	28	29	30	31
	-	-	-	-	-	-	-	-	-	-	-	-	-	-	-	-	-	-	-	-	-	-	-	-	-	-	-	-	-	-	-

June	Sa	Su	M	Tu	W	Th	F	Sa	Su	M	Tu	W	Th	F	Sa	Su	M	Tu	W	Th	F	Sa	Su	M	Tu	W	Th	F	Sa	Su
2019	1	2	3	4	5	6	7	8	9	10	11	12	13	14	15	16	17	18	19	20	21	22	23	24	25	26	27	28	29	30
	-	-	-	-	-	-	-	-	-	-	-	-	-	-	-	-	-	-	-	-	-	-	-	-	-	-	-	-	-	-

Jul	M	Tu	W	Th	F	Sa	Su	M	Tu	W	Th	F	Sa	Su	M	Tu	W	Th	F	Sa	Su	M	Tu	W	Th	F	Sa	Su	M	Tu	W
2019	1	2	3	4	5	6	7	8	9	10	11	12	13	14	15	16	17	18	19	20	21	22	23	24	25	26	27	28	29	30	31
	-	-	-	-	-	-	-	-	-	-	-	-	-	-	-	-	-	-	-	-	-	-	-	-	-	-	-	-	-	-	-

Aug	Th	F	Sa	Su	M	Tu	W	Th	F	Sa	Su	M	Tu	W	Th	F	Sa	Su	M	Tu	W	Th	F	Sa	Su	M	Tu	W	Th	F	Sa
2019	1	2	3	4	5	6	7	8	9	10	11	12	13	14	15	16	17	18	19	20	21	22	23	24	25	26	27	28	29	30	31
	-	-	-	-	-	-	-	-	-	-	-	-	-	-	-	-	-	-	-	-	-	-	-	-	-	-	-	-	-	-	-

Sep	Su	M	Tu	W	Th	F	Sa	Su	M	Tu	W	Th	F	Sa	Su	M	Tu	W	Th	F	Sa	Su	M	Tu	W	Th	F	Sa	Su	M
2019	1	2	3	4	5	6	7	8	9	10	11	12	13	14	15	16	17	18	19	20	21	22	23	24	25	26	27	28	29	30
	-	-	-	-	-	-	-	-	-	-	-	-	-	-	-	-	-	-	-	-	-	-	-	-	-	-	-	-	-	-

Oct	Tu	W	Th	F	Sa	Su	M	Tu	W	Th	F	Sa	Su	M	Tu	W	Th	F	Sa	Su	M	Tu	W	Th	F	Sa	Su	M	Tu	W	Th
2019	1	2	3	4	5	6	7	8	9	10	11	12	13	14	15	16	17	18	19	20	21	22	23	24	25	26	27	28	29	30	31
	-	-	-	-	-	-	-	-	-	-	-	-	-	-	-	-	-	-	-	-	-	-	-	-	-	-	-	-	-	-	





Gîte - Self Catering  
Atalhada - Azores  
"Casa da Rocha Quebrada"

9

[Book now](#)




Availability calendar - from : october 2019

Nov	F	Sa	Su	M	Tu	W	Th	F	Sa	Su	M	Tu	W	Th	F	Sa	Su	M	Tu	W	Th	F	Sa							
2019	1	2	3	4	5	6	7	8	9	10	11	12	13	14	15	16	17	18	19	20	21	22	23	24	25	26	27	28	29	30
	-	-	-	-	-	-	-	-	-	-	-	-	-	-	-	-	-	-	-	-	-	-	-	-	-	-	-	-	-	

Dec	Su	M	Tu	W	Th	F	Sa	Su	M	Tu	W	Th	F	Sa	Su	M	Tu	W	Th	F	Sa	Su	M	Tu							
2019	1	2	3	4	5	6	7	8	9	10	11	12	13	14	15	16	17	18	19	20	21	22	23	24	25	26	27	28	29	30	31
	-	-	-	-	-	-	-	-	-	-	-	-	-	-	-	-	-	-	-	-	-	-	-	-	-	-	-	-	-	-	

[Month : Next >>](#)

Rental rates - Gîte - Self Catering - Country House - from 1 to 6 Person(s)

Rates	Night	Weekend	week	2 weeks	Month
 Low season	NZ\$206* ↓	-	-	-	-
 Mid season	NZ\$309* ↓	-	-	-	-
 High season	NZ\$429*	-	-	-	-

[↓ Reducing rates](#)

[Book now](#)

Booking conditions

• Reservation

→ Payment made upon reservation : 50% of rental sum  
→ Payment balance : on handing over the keys

• rentals

→ Service charges included  
→ Cleaning charge on departure included  
→ Anticipated supplement for :  
- baby  
- animals  
- supplementary bed(s)

Accepted methods of payment

• Bank transfer (wire) • Cash

[▶ Book now](#)

[▶ Contact the owner](#)

Contact directly the property owners

[www.iha.co.nz](http://www.iha.co.nz)

Advert No.

70803

[>> Book now <<](#)

Contact

Spoken languages



\* Converted at the rate indicated : €100 = \$116.85 = £89 = NZ\$171.66

Advert No. 70803

[www.iha.co.nz](http://www.iha.co.nz)

