

Charming holiday letting Saint-François "Villa Alamanda"

Vacation rentals for 6 people, with private swimming pool, beachfront



Charming Villa, detached, single storey, separate entrance, in a(an) Private estate

Setting : heavenly, tropical

Capacity : from 1 to 6 person(s)

Bedroom(s) : 3

Room(s) : 4



Gay friendly
Naturism



Theme breaks
Golf
Scuba diving

Saint-François - Grande-Terre

Guadeloupe

Reservation : +590 (0) 690640355 (Guadeloupe)

Advert No. 1103

www.iha.co.nz



Charming holiday letting



Charming Villa, detached, single storey, separate entrance, in a(an) Private estate

- **Ideal for large families, family**
- **View :** panoramic, not overlooked, sea/ocean, swimming pool, garden/park, fantastic sunset
- **Setting :** heavenly, tropical
- **Exposure :** South

" The villa is situated in a tourist residence, in the quiet, the Pointe des Châteaux on Saint-François is 300 m from the beach of anse à la Gourde (white sand beach). Fully equipped, linens provided (excluding beach towels), the villa consists: a fully equipped kitchen open via 2 bars with flaps on the terrace and pool, a double living room with flat screen TV / DVD / Canalsat / Wifi Internet, 3 air-conditioned rooms with bathrooms (shower/WC). Outside: a beautiful Gallery along the entire length of the villa with living dining room, large terrace around the private pool to salt (5 * 8 m), with 6 sun loungers, barbecue, outdoor shower. A beautiful wooded and enclosed garden surrounds the villa. "

Assets

- **Swimming pool :**
Private swimming-pool, rectangular (length 8m, width 5m), sea water, illuminated, steps in, child secure, outside shower
- **Parking :**
Parking uncovered : 2 off road.
- **baby equipment :**
Baby potty

Benefits :
Direct access to the beach

Surroundings & location



" Saint-François is the first nautical base of Guadeloupe: you can practice all water sports: sailing, kitesurfing, Navy-jet, diving, big game fishing, windsurfing... More pointe des Châteaux site is only 4 km from the residence. You can visit the islands of the archipelago (Marie-Galante, les Saintes, la Désirade...) from the seaport of St François (departure every day). In addition, you can visit the Damoiseau rum distillery and rum is one of the most famous of Guadeloupe and the main on Grande Terre. "

Leisure

- **Leisure activities less than 20 km / 12 miles :**

Bathing, snorkelling, scuba diving, water skiing, jet ski, surfing, windsurfing, sailing, kite surfing, golf, tennis, riding school, pathway, coastal/forest paths, hiking, mountain bike (path), parascending, parachuting, Microlights, flying (club), glider (club), boat trips, horse trekking, ATV/Quad Bike, acrobatics, fishing, deep-sea angling, angling, spear fishing, pétanque pitch

- **Supervised :**

Sailing school, dive school, tennis school, riding school

Surroundings

- **Locality :**
Sea/ocean 300m
Sandy beach 300m
Nudist beach 2km
Public tennis court 5km
18 hole golf course 5km
Flying clubs 5km
Windsurfing spots 10km
Surfing spots 10km
Forest 40km
Marina 5km



façade



view from the swimming pool

Charming holiday letting
Grande-Terre - Saint-François
"Villa Alamanda"

3

[Book now](#)



separate kitchen

Interior

- **Receive up to :**
from 1 to 6 person(s) (4 adults, 2 children)
- **Liveable floor area :**
120m²
- **Interior layout :**
4 Room(s), 3 bedroom(s), 3 shower room, 3 WC, living room 40m², separate kitchen, dining area, tv room, reception hall, laundry room, pantry
- **Sleeps - bed(s) :**
2 double bed(s), 2 single bed(s), 1 baby cot (s)
- **Guest facilities :**
T.V., hi-fi system, DVD player, board games, book collection, t.v points, telephone, internet access, cupboard, Hanging wardrobe, safe deposit box, radio alarmclock, hair dryer, partly air conditioned, mobile cool air fan, ceiling paddle fan, Glazed in area, Curtains, Blinds, Rolling shutters, electric shutters, entry phone system
- **Appliances :**
Crockery/cutlery, kitchen utensils, cafetiere, electric coffee maker, electric kettle, toaster, juicer, food processor, gas cooker, electric hobs, oven, micro-wave oven, extractor hood, refridgerator, freezer, ice maker, dish washer, washing machine, vacuum cleaner, iron, ironing board

Exterior

- **Ground surface :**
700m²
- **Outside accommodation :**
Terrace > 200m², covered terrace 45m², sundeck 200m²
- **Outside setting :**
Enclosed grounds 700m², tropical garden 300m²
- **Outside amenities :**
Summer living area, outside bar, BBQ, garden table(s), 6 garden seat(s), trolley on wheels, garden seated area, 6 chaise(s) longue(s), outside shower facilities



living room

Services

- **Washing :**
Sheets, Towels, Linen, Blanket(s), Pillows
- **House :**
Cleaning supplement (1 X / per week + NZ\$84*), Cleaning on departure supplement (+NZ\$118*), Garden/swimming pool maintenance, Parking
- **Personnel :**
Chef(s) supplement
- **Restauration :**
Locally produced meals supplement (7 X / per week)

For your guidance

- **For your guidance**
Children welcome
Pets accepted under certain conditions (ask the owner)
Mobile telephone network coverage, personal transport advisable
Water : hot/cold
Local voltage supply : 220-240V / 50Hz
Electricity supply : mains



tv room

Advert No. 1103

www.iha.co.nz



>> HOLIDAY LETTINGS

BOOK DIRECT WITH THE OWNERS

Photo album - 1



view from the swimming pool



façade



separate kitchen



tv room



living room

Photo album - 2



bedroom



shower room



bedroom



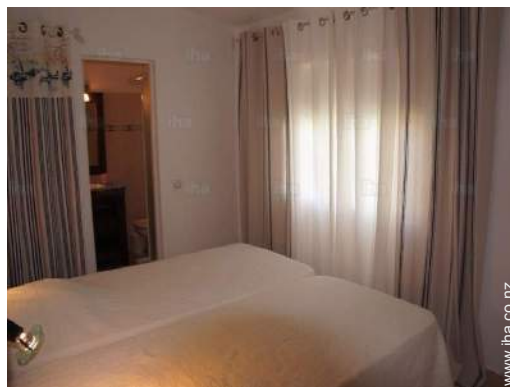
shower room



bedroom



separate kitchen



shower room

Photo album - 3



Outside accommodation



reception hall



view from the living room



view from the swimming pool



view from the swimming pool



tropical garden



Outside setting

[Theme breaks](#)

Golf

Scuba diving

Charming holiday letting
Grande-Terre - Guadeloupe
"Villa Alamanda"

8


[Book now](#)

Route map



Location & Access

" The villa is situated in the Residence Karukera to Pointe des Châteaux: from the airport, take the direction of St François, then follow the direction of the TCB of the castles. "

 GPS coordinates in degrees, minutes, seconds: Latitude 16° 15'12.08"N - Longitude 61°12'36.12"W ([Dwelling](#))

Address

→ Résidence Karukera
97118 Saint-François

• [Airport Guadeloupe Pôle Caraïbes](#)

→ Pointe-à-Pitre, Grande-Terre,
Guadeloupe
→ Distance : 36km
→ Time : 1h

- Saint-François : (5km)
- Sainte-Anne : (10km)
- Le Moule : (10km)

Contact

Spoken languages



Location



Charming holiday letting Saint-François - Guadeloupe "Villa Alamanda"

10
[Book now](#)

Availability calendar - from : may 2018

May	Tu	W	Th	F	Sa	Su	M	Tu	W	Th	F	Sa	Su	M	Tu	W	Th	F	Sa	Su	M	Tu	W	Th							
2018	1	2	3	4	5	6	7	8	9	10	11	12	13	14	15	16	17	18	19	20	21	22	23	24	25	26	27	28	29	30	31

June	F	Sa	Su	M	Tu	W	Th	F	Sa	Su	M	Tu	W	Th	F	Sa	Su	M	Tu	W	Th	F	Sa							
2018	1	2	3	4	5	6	7	8	9	10	11	12	13	14	15	16	17	18	19	20	21	22	23	24	25	26	27	28	29	30
	-	-	-	-	-	-	-	-	-	-	-	-	-	-	-	-	-	-	-	-	-	-	-	-	-	-	-	-	-	-

Jul	Su	M	Tu	W	Th	F	Sa	Su	M	Tu	W	Th	F	Sa	Su	M	Tu	W	Th	F	Sa	Su	M	Tu							
2018	1	2	3	4	5	6	7	8	9	10	11	12	13	14	15	16	17	18	19	20	21	22	23	24	25	26	27	28	29	30	31
	-	-	-	-	-	-	-	-	-	-	-	-	-	-	-	-	-	-	-	-	-	-	-	-	-	-	-	-	-	-	-

Aug	W	Th	F	Sa	Su	M	Tu	W	Th	F	Sa	Su	M	Tu	W	Th	F	Sa	Su	M	Tu	W	Th	F							
2018	1	2	3	4	5	6	7	8	9	10	11	12	13	14	15	16	17	18	19	20	21	22	23	24	25	26	27	28	29	30	31
	-	-	-	-	-	-	-	-	-	-	-	-	-	-	-	-	-	-	-	-	-	-	-	-	-	-	-	-	-	-	-

Sep	Sa	Su	M	Tu	W	Th	F	Sa	Su	M	Tu	W	Th	F	Sa	Su	M	Tu	W	Th	F	Sa	Su							
2018	1	2	3	4	5	6	7	8	9	10	11	12	13	14	15	16	17	18	19	20	21	22	23	24	25	26	27	28	29	30
	-	-	-	-	-	-	-	-	-	-	-	-	-	-	-	-	-	-	-	-	-	-	-	-	-	-	-	-	-	-

Oct	M	Tu	W	Th	F	Sa	Su	M	Tu	W	Th	F	Sa	Su	M	Tu	W	Th	F	Sa	Su	M	Tu	W							
2018	1	2	3	4	5	6	7	8	9	10	11	12	13	14	15	16	17	18	19	20	21	22	23	24	25	26	27	28	29	30	31
	-	-	-	-	-	-	-	-	-	-	-	-	-	-	-	-	-	-	-	-	-	-	-	-	-	-	-	-	-	-	-

Nov	Th	F	Sa	Su	M	Tu	W	Th	F	Sa	Su	M	Tu	W	Th	F	Sa	Su	M	Tu	W	Th	F							
2018	1	2	3	4	5	6	7	8	9	10	11	12	13	14	15	16	17	18	19	20	21	22	23	24	25	26	27	28	29	30
	-	-	-	-	-	-	-	-	-	-	-	-	-	-	-	-	-	-	-	-	-	-	-	-	-	-	-	-	-	-

Dec	Sa	Su	M	Tu	W	Th	F	Sa	Su	M	Tu	W	Th	F	Sa	Su	M	Tu	W	Th	F	Sa	Su	M							
2018	1	2	3	4	5	6	7	8	9	10	11	12	13	14	15	16	17	18	19	20	21	22	23	24	25	26	27	28	29	30	31
	-	-	-	-	-	-	-	-	-	-	-	-	-	-	-	-	-	-	-	-	-	-	-	-	-	-	-	-	-	-	-

Jan	Tu	W	Th	F	Sa	Su	M	Tu	W	Th	F	Sa	Su	M	Tu	W	Th	F	Sa	Su	M	Tu	W	Th							
2019	1	2	3	4	5	6	7	8	9	10	11	12	13	14	15	16	17	18	19	20	21	22	23	24	25	26	27	28	29	30	31
	-	-	-	-	-	-	-	-	-	-	-	-	-	-	-	-	-	-	-	-	-	-	-	-	-	-	-	-	-	-	-

Feb	F	Sa	Su	M	Tu	W	Th	F	Sa	Su	M	Tu	W	Th	F	Sa	Su	M	Tu	W	Th									
2019	1	2	3	4	5	6	7	8	9	10	11	12	13	14	15	16	17	18	19	20	21	22	23	24	25	26	27	28		
	-	-	-	-	-	-	-	-	-	-	-	-	-	-	-	-	-	-	-	-	-	-	-	-	-	-	-	-	-	-

- Reserved
- Low season
- Mid season
- Promotional period
- Festive specials



Charming holiday letting
Grande-Terre - Saint-François
"Villa Alamanda"

11
[Book now](#)

Availability calendar - from : february 2019

Mar	F	Sa	Su	M	Tu	W	Th	F	Sa	Su	M	Tu	W	Th	F	Sa	Su	M	Tu	W	Th	F	Sa	Su							
2019	1	2	3	4	5	6	7	8	9	10	11	12	13	14	15	16	17	18	19	20	21	22	23	24	25	26	27	28	29	30	31
-	-	-	-	-	-	-	-	-	-	-	-	-	-	-	-	-	-	-	-	-	-	-	-	-	-	-	-	-	-	-	

Apr	M	Tu	W	Th	F	Sa	Su	M	Tu	W	Th	F	Sa	Su	M	Tu	W	Th	F	Sa	Su	M	Tu							
2019	1	2	3	4	5	6	7	8	9	10	11	12	13	14	15	16	17	18	19	20	21	22	23	24	25	26	27	28	29	30
-	-	-	-	-	-	-	-	-	-	-	-	-	-	-	-	-	-	-	-	-	-	-	-	-	-	-	-	-	-	

- Reserved
- Low season
- Mid season
- Promotional period
- Festive specials

[Month : Next >>](#)

Rental rates - Charming Villa - from 1 to 6 Person(s)

Rates	Night	Weekend	week	2 weeks	Month
 Low season	-	-	NZ\$1942*	NZ\$3884*	NZ\$6586*
 Mid season	-	-	NZ\$2280*	NZ\$4559*	NZ\$7751*
 High season	-	-	NZ\$2533*	NZ\$5066*	NZ\$9288*
 Festive specials	-	-	NZ\$3023* (Saturday)	NZ\$6046* (Saturday)	NZ\$11145* (Saturday)
 Promotional period	-	-	NZ\$1604*	NZ\$3209*	NZ\$5404*

(Check-in day)

[Book now](#)





separate kitchen



tv room



living room



view from the swimming pool



façade

Booking conditions

• Reservation

- Payment made upon reservation : 20% of rental sum
- Payment balance : on handing over the keys
- Deposit required : NZ\$1689*

• rentals

- Service charges included
- Day tax included
- Cleaning charge levy on departure : NZ\$118*
- Anticipated supplement for :
 - animals

Accepted methods of payment

- International Money Order
- Bank transfer (wire)
- Cheque
- Bankers draft
- Cash

[▶ Book now](#)

[▶ Contact the owner](#)

Contact directly the property owners

www.iha.co.nz

Advert No.

1103

[>> Book now <<](#)

Contact

Spoken languages



* Converted at the rate indicated : €100 = \$123.46 = £88.94 = NZ\$168.87

Advert No. 1103

www.iha.co.nz

